

# SPRINGFIELD FOUNDATION

ANNUAL  
REPORT  
2017





Springfield Foundation  
For good. For ever.®

### About the cover

Molly Mattin is an Ohio artist residing in Springfield. She took a strong interest in art at a very young age and received her regional and national recognition in art throughout high school and college. Molly studied graphic design and is self-taught in other areas of art. She has been featured in several blogs, newspapers and publications throughout the years. Molly is influenced by nature, people, current events and architecture which shows in her work. She works in a variety of mediums, such as acrylics, collage, watercolor, and pen and ink. Her artwork resides in many private residences throughout the United States and several other countries. Contact information: Molly Mattin, 937.631.1131, mollymattin@gmail.com

Special thanks to Rod Hatfield, our donors, grant recipients and friends of the Springfield Foundation for providing photography for this year's report.

## Highlights



**Clark County Heritage Center** – A Springfield icon for over a century.



**Tecumseh Land Trust** – Protecting local farm land, water and natural resources.



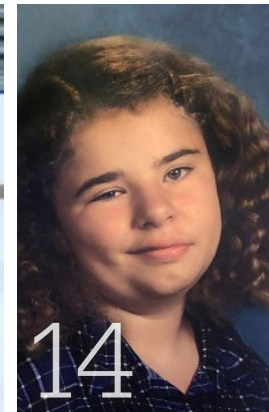
**Pages of Possibilities** – A focus on school-age literary access.



**Springfield Soup Kitchen** – Filling the void for homeless individuals.



**The NTPRD Chiller** – The "Coolest" place in Springfield.



**An Angel Among Us** – The Bethany Thompson Memorial Scholarship.



**The Parlato Endowment Fund**



**The Women's Partnership Funds**



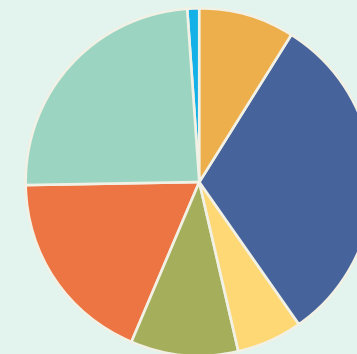
**The African-American Community Family of Funds**

### Contents

<b>1</b> Message From the President	<b>18</b> Donor Conversations
<b>2</b> Arts & Culture	<b>20</b> Planned Giving
<b>4</b> Environment	<b>22</b> Affiliates
<b>6</b> Education	<b>24</b> Financials
<b>8</b> Health	<b>26</b> New Endowment Funds
<b>10</b> Human Services	<b>28</b> Existing Endowment Funds
<b>12</b> Civic Affairs	<b>30</b> Contributors to New and Existing Funds
<b>14</b> Scholarships	<b>BC</b> Board of Directors & Staff
<b>16</b> Legacy Society	

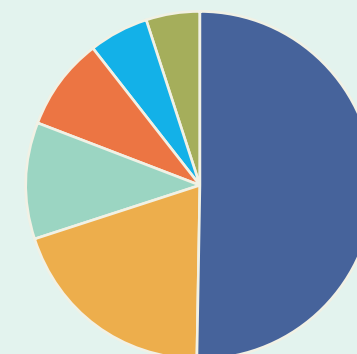
## Grants and Scholarships

In 2017 over \$5,832,000 in grants and scholarships were awarded. Discretionary grants including out of cycle and executive director grants totaled \$599,762. Scholarship awards from all funds totaled \$539,125 and included 355 new and renewal awards.



### Grants by Program Area

Arts and Culture.....	\$56,500.....	9%
Civic Affairs.....	185,610.....	31%
ECA.....	37,500.....	6%
Education.....	57,105.....	10%
Health.....	108,913.....	18%
Human Services.....	146,300.....	24%
Other.....	7,834.....	1%
<b>Total.....</b>	<b>\$599,762.....</b>	<b>100%</b>



### Grants and Scholarships by Fund Type

Agency Grants.....	\$2,932,364.64
Charitable Checking .....	1,153,708.56
Discretionary Grants.....	631,284.15
Advised Grants .....	503,140.32
Scholarships .....	320,264.61
Designated.....	291,350.13
<b>Total .....</b>	<b>\$5,832,112.41</b>

## Message from the President

Dear Friends,

As another year at the Springfield Foundation draws to a close, I'm looking back on ten years as a trustee and two years as Board President. I'm proud to have been part of the Foundation as its assets have grown to over \$80 million and as we end a year in which we distributed \$5.8 million to improve our community.

Often, when we seek to measure our impact, we look to the numbers found on the pages of this annual report. Those numbers do paint an impressive picture! But as I assumed leadership roles at the Foundation, I thought more about the impact we make by helping build organizations and putting systems in place to help those organizations thrive.

The Foundation is guided with input from other community foundations, local leaders, the front-line staff at local organizations and from our donors and grantees. Springfield Foundation staff are present in our community, listening and lending support. We've just welcomed five new Trustees who bring valued professional or personal skills to our Board and are well-positioned to advocate for all aspects of our community.

We excel at investing and distributing funds as our donors have specified. However, with nearly \$7 million in unrestricted funds, The Springfield Foundation also has the means to distribute funds in response to the changing needs of our community. We have just completed a thorough process to guide distribution to projects where the need is great AND we see opportunity to make a significant impact. As I end my term as President, I am grateful for the experience and proud that The Springfield Foundation remains in great shape to execute its mission and live up to its tagline: For Good, For Ever.

For good. For ever.

Kim Fish, President



Kim Fish

# The Heritage Center of Clark County

Written by **Bridget Doane**, Director of Development

More than a century old, and previously Springfield's City Hall and Marketplace, The Heritage Center of Clark County has become the home for Springfield and Clark County's history and an icon of the Springfield landscape.

The Heritage Center of Clark County, which opened in 2001, occupies a 50 feet by 462 feet, 56,000 square foot, brick and stone building in the center of downtown Springfield. The building was constructed in 1890 and is listed on the National Register of Historic Sites. The Heritage Center exhibit galleries, an archive and research library, meeting facilities, Un Mundo Café,

and several local non-profit organizations are all housed in the building.

The Heritage Center is the home of the Clark County Historical Society, which was founded in 1897. The mission of the Clark County Historical Society is to collect, preserve, and interpret resources which provide understanding and appreciation of Clark County's heritage, and to relate the community's past to the present and its future.

The Heritage Center is funded primarily through memberships, donations, and an endowment of which nearly the entire annual revenue generated is spent on building maintenance, insurance, and utilities. In order to ensure continued operation of the museum and the services of the Clark County Historical Society, it was necessary to identify and secure additional funding.

In November 2017, Clark County voters passed a .3 mil tax levy to help fund The Heritage Center. As a result, The Heritage Center will receive approximately \$3.5 million in tax revenue over five years. Over

85% of that funding will be used toward capital expenses and repairs for the building, including replacement and repair of the HVAC system, elevators, roof and windows, carpets, and parking lot.

Securing this crucial funding will make a tremendous impact on the Clark County Historical Society and The Heritage Center. With most of its capital needs being met over the next 5 years, the Historical Society can focus on continuing to provide high-quality programming and educational outreach opportunities to students and guests from Clark County and beyond. The additional revenue will also allow The Heritage Center to begin the process of changing some of their permanent exhibits, many of which have been on display for nearly twenty years, since the museum's opening.

The Clark County Historical Society is looking forward to all the possibilities to come, as they continue to carry out their mission through research, exhibits, programs, outreach, educational programming and more!



## Other Arts Grants Funded:

<b>Clark County Historical Society</b>	
Operational support .....	\$5,000
<b>Clark County Retired Teachers Association</b>	
One Room School Program.....	\$2,000
<b>Clark State Community College Performing Arts Center</b>	
Clark State Performing Arts Center 2017-18 and 2018-19 Seasons .....	\$5,000
<b>Gammon House, Inc.</b>	
Gammon House Juneteenth Celebration.....	\$7,500
<b>Springfield Arts Council</b>	
The 2018 Summer Arts Festival .....	\$15,000
<b>Springfield Museum of Art</b>	
Capital Campaign (\$25K over 5 yrs).....	\$5,000
<b>Springfield Museum of Art</b>	
Operational support .....	\$5,000
<b>Springfield Symphony Orchestra</b>	
Operational support .....	\$6,000
<b>The Westcott House Foundation</b>	
Operational support .....	\$6,000

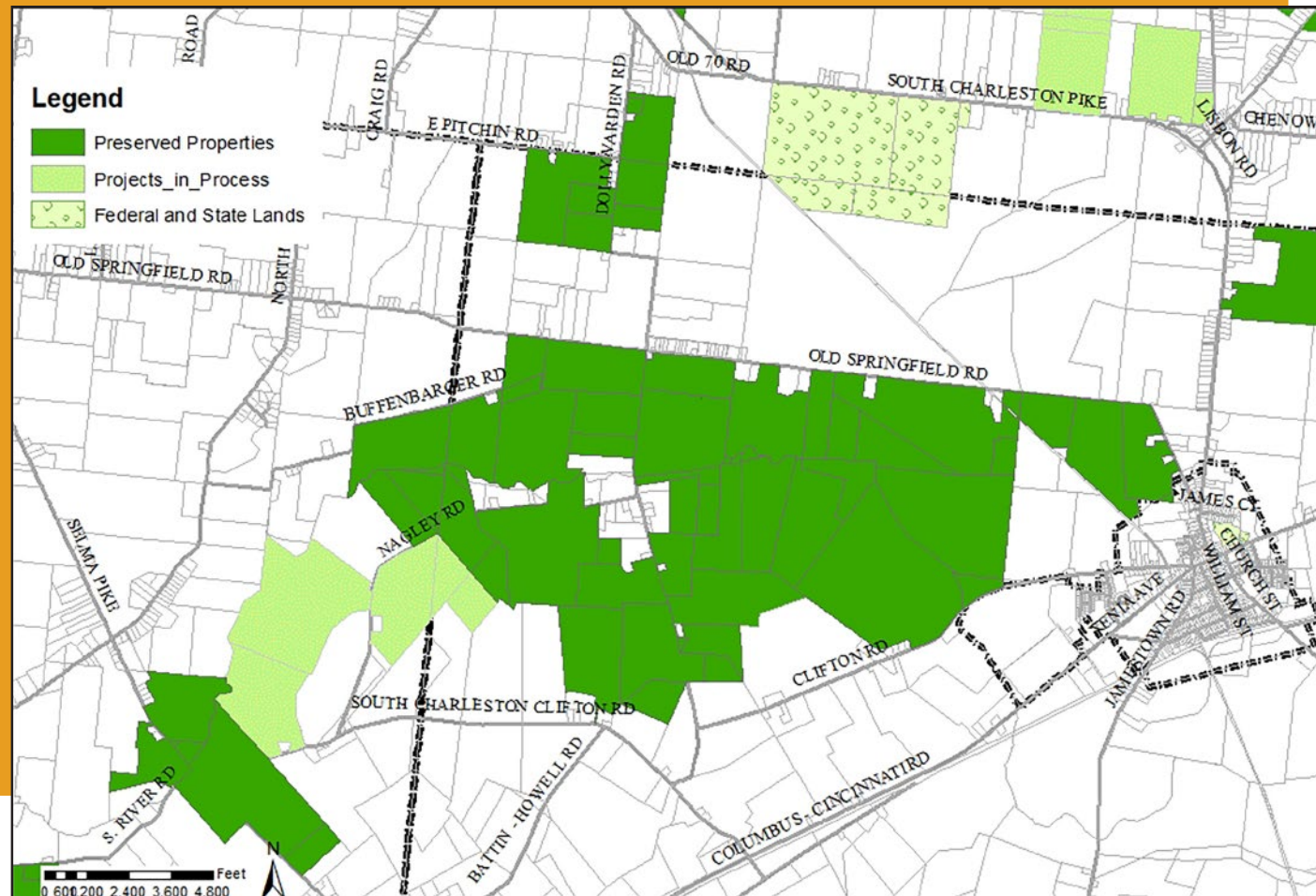
**Total Arts and Culture** \$56,500

# Tecumseh Land Trust:

## Protecting Local Farmland, Water, and Natural Areas Forever

There is no doubt that the Little Miami River was important for Native American Shawnee Chief Tecumseh. Born 250 years ago, the Shawnee leader navigated along rivers and creeks with agility, through forests the likes of which we have never experienced. After European settlement, land use changed rapidly and radically. Ohio's old growth forests were cut. Rivers and streams were managed to create more tillable land and more land for houses and industry. Most of the wild areas, such as the Great Black Swamp that covered a third of western Ohio, were lost.

### Conservation Easements held by Tecumseh Land Trust Largest block of preserved land over 3,400 acres



**Fifty years ago**, Ohio's leaders took a significant step to honor our rivers and surrounding rich habitat, passing the first Scenic Rivers Act in the nation. The first river given this designation was the Little Miami. The federal government passed a similar act the next year, and the ensuing 50 years have been filled with a rich and growing appreciation for the benefits our rivers, wetlands, and streamside forests provide.

Locally, a group of people began to ponder the need to protect, promote, and enhance the health of streams and forests some 30 years ago. The village of Yellow Springs considered selling a property that had been purchased with federal "Open Space" funds for development. This small group saw a need for local community led advocacy and action to protect and steward Ohio's forests and streams. They founded Tecumseh Land Trust for this purpose.

Land Trust leaders soon found that the rich farmland surrounding our river corridors was also at risk. Population growth leveled off in southwest Ohio by the 1970s, but the amount of land converted to development has tripled since that time. Over the last 30 years, Tecumseh Land Trust (TLT) has had the privilege to work with scores of landowners to consider options to protect their family lands. To date, the group has preserved 158 properties, comprising over 26,000 acres. Their work

continues, thanks to the support of members in Clark and Greene Counties, who love the farms, the rivers, and the diverse and unique habitat of our state. We are grateful to the Springfield Foundation and its donors for their support and encouragement. Local support makes it possible for us to bring millions of Farm Bill and Clean Ohio dollars to protect local resources.

TLT's ultimate goal is to preserve 100,000 acres in Clark and Greene counties, predominately farmland, buffering streams and wildlife habitat key to the health of

water and aquatic life. The map on the left illustrates the desired goal – a block of 3,400 acres of prime farmland, surrounding and protecting the headwaters of the Scenic Little Miami River, forever.

Our awareness of the importance of best conservation practices for water quality is growing every day. Tecumseh Land Trust stands ready to support families who want to preserve and conserve our irreplaceable natural resources in southwest Ohio.

### Other Environment Grants Funded:

<b>Animal Welfare League of Clark County</b>	
Prevent Unwanted Pets (P.U.P.) .....	\$9,000
<b>B-W Greenway Community Land Trust</b>	
Prairie Pathways to Discovery .....	\$5,000
<b>Glen Helen Association</b>	
Glen Helen Outdoor School Campership Fund .....	\$5,000
<b>Master Gardeners</b>	
Feature Garden final disbursement .....	\$10,000
<b>National Trail Parks and Recreation District</b>	
Playground Fall Protection Program .....	\$8,500
<b>Total Environment, Conservation &amp; Animal Welfare</b>	<b>\$37,000</b>



# Pages of Possibilities

by **Karlos L. Marshall**

## Born out of a yearning for vocational calling,

The Conscious Connect Redevelopment Corporation was conceptualized with my longtime friend, Moses B. Mbeseha. Conversations started between us at Wittenberg University—long before we knew we would create a nonprofit to change the world. After we graduated in 2013, The Conscious Connect, Inc. was born shortly thereafter in April of 2015. Our organization was founded on the principle to reimagine and redevelop underutilized spaces for the purposes of education, culture and peace.

With a focus on school-age literary access and neighborhood revitalization, we are the United States' only known grassroots movement—with the primary aim of creating literary oases to end urban book deserts. We define book deserts as “a geographical area in which the residents lack the access and/or resources to high-quality, affordable, age-appropriate, and culturally-relevant and responsive print books.” Numerous studies have indicated the disparities of book access in high-poverty areas and that yield issues such as the 30 Million Word Gap.

To address this systematic issue, we launched our signature initiative “The Root”—in Springfield in January of 2016. This program has established more than 70 neighborhood literacy stations that contain high-quality and age-appropriate books in barbershops

and beauty salons (and other small businesses) to engage pre-k through 8th grade students through reading. This ‘read while you wait concept’ spread like wildfire across the country, but only addressed literacy needs for boys through barbershops. We became the first organization nationally to extend this concept to beauty salons because we knew that educating our girls was just as paramount.

Additionally, we also adapted this concept to ensure that the books in partnering locations were culturally-relevant (i.e., books featuring diverse primary characters and/or written by diverse authors) and explored topics that sparked imagination. Too often, our children and youth are required to read stories that do not reflect their realities. On the contrary, when they do read stories about diverse characters, the narratives are traditionally limiting to biographies and human suffrage movements. We wanted the conversation to incorporate conversations about representation in STEM, entrepreneurship and the creative arts. We wanted the page of possibilities to be opened up for the children of our communities, as they had been for us at early ages.

Further, we launched ‘Words on Wheels’ (i.e., a cargo book bike capable of holding more than 350 books at a time) at a Springfield High School football game in the fall. This was made possible

through a partnership with the University of Dayton’s Innovation Center and School of Engineering. Words on Wheels was the perfect way for us to continue to innovate our platform and utilize human-centered design to meet the community where they are. The mobility of the book bike allows us to attend community events or pay a visit to a neighborhood park at a moment’s notice. This is also a way for us to make reading fun, engaging and enjoyable because reading is often viewed a mundane chore.

In a similar spirit, we have installed numerous ‘Houses of Knowledge’ (i.e., birdhouse book boxes) to promote neighborhood beautification and encourage an inter-generational love of reading for families through direct and non-traditional literacy access. These access points have been placed at community centers, churches, residential homes across the region. The “take a book, leave a book” exchange concept has become an international phenomenon, but are more commonly found in affluent areas. As we continue to build the ecosystem of educational opportunities, we have observed that many times people do not have books to leave. For us, this is okay as we understand that we operate in a book desert and are actively creating the infrastructure so children, youth and families can eventually be active participants in a community book exchange culture.

With the funding of the Springfield Foundation and the African-American Community Fund (AACF), we have extended this initiative by partnering with the Springfield City School District. We have placed a House of Knowledge at the Miami Valley Child Development Center on South Yellow Springs and other locations will include the Clark Preschool, Lagonda and Horace Mann. Further, students from Hayward Middle School worked closely with their feeder elementary schools of Lincoln, Perrin Woods, Fulton and Kenwood to build Houses of Knowledge that will be placed on-site.

Through our number of growing partnerships, we are currently leveraging funding from the Springfield Foundation and

AACF by expanding our efforts into urban redevelopment and revitalization. We’re widely known across the region for literacy but the founding vision for our organization still remains “to spark a world-class cultural renaissance and neighborhood revitalization movement — by restoring the essences and nuances of urban cultures and communities.” With that in mind, we approach our work from an asset model of creative solutions to historical problems. We ask ourselves what are the resources that the community already has readily available, rather than asking what does the community not have from a deficit approach.

We have been able to cultivate a strategic partnership with the Clark County Land Bank (CCLB) and the City of Springfield to create the nation’s first full-scale Reading Parks. By partnering with the CCLB, we will revitalize properties that were once considered abandoned, lost and long forgotten. By removing unsafe physical structures, beautifying vacant lots, and creating both passive and active learning and wellness spaces in the community, we hope to instill a sense of community



pride, civic engagement and peace. At a minimum, all of these pocket parks will include Houses of Knowledge, benches, solar powered lighting, landscaping, and peace poles.

The support we have received from the community has been monumental to the growth of our organization. With the help of many, we recently were awarded the 2018 Outstanding Creative Youth Programming Award by the City of Springfield’s Human Relation Council at the Annual Martin Luther King Jr. Luncheon. Above all else, we want show people that they matter and that their stories are valued, as we continue to turn the pages of possibilities — towards a cultural renaissance.

## Other Education Grants Funded:

<b>Clark State Foundation</b> Clark County Scholars (Champion City Scholars Expansion).....	\$3,105
<b>Clark State Foundation</b> The Champion City Scholars Program .....	\$5,000
<b>Crayons to Classrooms</b> Operational support.....	\$5,000
<b>Springfield Christian Youth Ministries</b> Biz Ba\$ics Entrepreneurship Program.....	\$2,000
<b>Springfield City School District Board of Education</b> Project Springboard Family Literacy Program .....	\$5,000
<b>Springfield City School District -CareerConnectED</b> Summer of STEM, design and manufacturing, and digital media.....	\$5,000
<b>Springfield Promise Neighborhood</b> Operational support.....	\$10,000
<b>The Conscious Connect</b> Houses of Knowledge & Reading Parks: The Development of Neighborhood Co-Op Literary Systems .....	\$15,000
<b>WellSpring</b> Supporting Partnerships to Assure Ready Kids (SPARK).....	\$7,000

**Total Education** \$57,105



# Happenings at the **Horse**

Since 1999, Rocking Horse Community Health Center has provided Pediatric, Adult Medical, Behavioral Health, and Obstetric Services to Clark County and surrounding areas. As you may have heard, Rocking Horse Center has expanded their services to now include General Dentistry, but did you know they've also added Chiropractic Solutions? Here's the latest on what's going on at 651 South Limestone Street.



## Chiropractic Solutions

In August of 2017, Dr. Bruce Brown joined the Rocking Horse Center staff as their Chiropractor. Chiropractic Solutions began as an effort to introduce patients to an alternative to pain medication. Demand quickly grew and they're now seeing patients 2 ½ days a week!

*"Dr. Brown is a people person. A Doctor of Chiropractic with Rocking Horse Community Health Center since 2017, he enjoys "the great energy, the wonderful patients and the awesome team" at the Center. Dr. Brown attended Olivet Nazarene University and Logan College of Chiropractic. Before joining the Rocking Horse Center team, he owned Sugar-creek Chiropractic. He is originally from Greene County and has settled with his family in Clark County. Dr. Brown's professional interests include treating sports related injuries, exercise to support chiropractic care, and integrating muscle activity. In his free time, he enjoys spending time with his family (especially his grandchildren!) water skiing, hunting, and fitness training."*



## Michael H. and Pauline D. Chakeres Dental Care

Through a generous donation from the Chakeres Family, Rocking Horse Center was able to open a much needed and anticipated General Dentistry Clinic in November 2017. Dr. Mark Duffy is seeing patients of all ages 5 days a week!

*"Being able to serve 'the great people of my hometown' while working as a team with his colleagues in medicine, therapy and chiropractics is important to RHCHC Chakeres Dental Care General Dentist Dr. Mark Duffy. A graduate of the Case Western Reserve University School of Dental Medicine, Dr. Duffy is a Springfield, Ohio native and the first dentist for the new Dental Service Line at Rocking Horse Community Health Center. His professional interests include comprehensive dental care, community dental outreach and continued growth and learning in the dental and medical fields. Personally, Dr. Duffy loves college football (Go, Irish), spending time with family and friends, fitness and cars."*

## Other Health Grants Funded:

<b>Alzheimer's Association</b>	Operational support.....	\$5,000
<b>Clark County Combined Health District</b>	Naloxone Kits for Springfield Police Dept.....	\$5,000
<b>Community Mercy Fdn-Springfield Regional Cancer Center</b>	Cancer Care Outreach Program.....	\$5,059
<b>Community Mercy Fdn-Springfield Regional Imaging Center</b>	No Excuses Mammography.....	\$5,059
<b>Oesterlen Services For Youth, Inc.</b>	Oesterlen's STAR (Self-control, Teamwork, And Respect) Group Therapy Program.....	\$5,000
<b>Planned Parenthood Southwest Ohio Region</b>	Operational support.....	\$5,000
<b>Prevent Blindness</b>	Healthyeyes.....	\$10,000
<b>Rocking Horse Community Health Center</b>	CHAMP Care Coordination (Coordinating Habilitation And Maximizing Potential).....	\$10,000
<b>Rocking Horse Community Health Center</b>	Chronic Disease Care Coordination.....	\$27,795
<b>Ronald McDonald House Charities of the Miami Valley Region</b>	There Is No Place like Home.....	\$5,000
<b>SIFI Ministry, Inc.-Safe Harbor</b>	Safe Harbor House Recovery Housing - Roof Replacement.....	\$3,000
<b>Springfield Family YMCA</b>	Financial Assistance.....	\$10,000
<b>Springfield Family YMCA</b>	Adaptive Aquatics.....	\$6,000
<b>WellSpring</b>	Families and Schools Together (FAST).....	\$7,000

**Total Health**

**\$108,913**

# Springfield Soup Kitchen: Filling the Void



In 2008, Carolyn Stegner recognized a need in Springfield, Ohio, that homeless and individuals in need were without hot meals. With encouragement and advice from St. Vincent de Paul Society and St. Patrick's Soup Kitchen in Troy, Ohio, Carolyn Stegner started the 'Springfield Soup Kitchen'.

Cooking out of her home, the first meals were served April 6th, 2009 in the basement of the former St. Mary's Catholic Church. The increasing need for more hot meals moved the Soup Kitchen in 2010 to Un Mundo Café and then permanently to its current location, 830 West Main Street. The Soup Kitchen offers refuge and a hot meal for those in need every Monday and Wednesday from 5pm-6pm. Volunteers come from all faiths and backgrounds. The Springfield Soup Kitchen is truly a community effort. Those who are served include the homeless, recently unemployed, pass through visitors and others in need. The majority of people served are facing hard times through no fault of their own and many are medically challenged. Over the past two years, the Springfield Soup Kitchen has served over 60,000 hot meals to those in desperation. However, many do not know that the Springfield Soup Kitchen goes far beyond serving meals. The Springfield Soup Kitchen is involved in various projects throughout Clark County, in hopes of providing for those in need. During extreme temperatures, the Springfield Soup Kitchen operates as a warming and cooling center and, as needs arise, The Soup Kitchen provides assistance for those experiencing medical needs, substance abuse, unplanned pregnancies and other hardships. Devoting time and resources to the children of the Springfield Soup Kitchen is also a main priority. More than 330 children frequent the Soup Kitchen and are catered to on special days. Christmas programs, Easter dinners and

Back to School Events are facilitated by the Soup Kitchen to allow these children to enjoy special days that would otherwise go unnoticed. The Springfield Soup Kitchen acts where there is pain and suffering and is working to make Springfield a better community.



## Other Human Services Grants Funded:

<b>American Red Cross Northern Miami Valley Ohio Chapter</b> The Home Fire Campaign.....	\$5,000
<b>Bethel Churches United -Food Pantry</b> Operational support.....	\$8,000
<b>Big Brothers Big Sisters of Springfield, Inc.</b> Youth Mentoring.....	\$5,000
<b>Clark County Family &amp; Children First Council</b> Substitute Care Resources Program.....	\$5,000
<b>Clark County Juvenile Court</b> Reading for Life.....	\$10,000
<b>Clark County Juvenile Court</b> Building Our Youth and Community (BOYAC).....	\$10,000
<b>Deaf Community Resource Center, Inc.</b> Clark County Deaf Community Resource Center.....	\$25,000
<b>Girl Scouts of Western Ohio</b> Staff-Led Girl Scout Troops for Economically Disadvantaged Girls from Clark County.....	\$3,500
<b>Goodwill Easter Seals Miami Valley</b> Child Screening Program.....	\$5,000
<b>Interfaith Hospitality Network of Springfield</b> Operational support.....	\$8,000
<b>Marriage Resource Center of Miami Valley</b> Within My Reach.....	\$2,500
<b>On-The-Rise</b> Operational support.....	\$5,000
<b>Project Woman of Springfield and Clark County</b> Community Advocacy and Education.....	\$5,000
<b>Rotary Club of Springfield, Ohio Foundation</b> Services to People with Disabilities Program.....	\$5,000
<b>Second Harvest Food Bank of Clark, Champaign and Logan Counties</b> Mobile Food Pantry.....	\$10,000
<b>Springfield Peace School, INC.</b> Creative Conflict Solving for Children.....	\$5,000
<b>Springfield Soup Kitchen</b> Operational support.....	\$7,500
<b>Tecumseh Council 439, Boy Scouts of America</b> Training for volunteers and youth leadership.....	\$2,500
<b>The Ohio State University Foundation</b> OSU EFNEP Farmer's Market Project.....	\$3,300
<b>The Riding Centre</b> Operational support.....	\$6,000
<b>The Salvation Army</b> Summer Day Camp.....	\$7,500
<b>United Way of Clark, Champaign &amp; Madison Counties</b> 2-1-1 Support.....	\$2,500

**Total Human Services \$146,300**



# The NTPRD Chiller – The "Coolest" Place in Springfield

In 2001, the National Trail Parks and Recreation District developed a \$17 million Capital Improvement Plan, billed as "something for everyone". This extensive plan intended to enrich family life in Clark County by providing unique recreational opportunities for residents and bring the area's parks and recreation amenities into the 21st century. The \$8.5 million NTPRD Chiller was the final piece completing the plan.

In October of 2014, the NTPRD Chiller opened after 13 years of hard work, a few challenges and considerable collaboration within the community. The NTPRD Chiller would not have been possible without the generous support offered by many private donors, organizations and foundations. The Springfield Foundation provided funding through grants over 5 years and supported this effort from beginning to end. This support is greatly appreciated and continues with the Tom Loftis Ice Arena Endowment Fund that will provide funding for participants and future projects at the rink.

National Trail worked closely with The Chiller, LLC to develop a management partnership for the rink. The NTPRD Chiller is the sixth location and ninth sheet of ice in The Chiller family of rinks built over the last 25 years in Central Ohio. The Chiller staff works closely with the Columbus Blue Jackets to offer numerous learn-to-play hockey and learn-to-skate programs provided for youth, high school and adult participants. The figure skating and theatre on ice programs have developed many competitive skaters and strive to bring the best experience to these up and coming athletes.

The NTPRD Chiller welcomes over 100,000 visitors each year and provides Clark County with diverse, year-round recreational opportunities. Patrons enjoy performances and sporting events that formerly bypassed Clark County. The arena, a part of the downtown redevelopment has created jobs and acted as an economic generator by increasing revenue at area hotels, restaurants and other local businesses.

## Other Civic Affairs Grants Funded:

<b>4-H &amp; FFA Awards Committee</b>	
Fair Ribbons .....	\$500
<b>Clark County Agricultural Assoc.</b>	
Cross Country Track, Boat and Event Shelter Barn .....	\$12,900
<b>Clark County Agricultural Assoc.</b>	
Fairgrounds and Lake Awareness Campaign (year 2 of 5) .....	\$25,000
<b>Community Improvement Corporation of Springfield-Clark County, Ohio</b>	
Operational support .....	\$5,605
<b>Leadership Clark County</b>	
Community Leadership Academy .....	\$5,000
<b>Legal Aid of Western Ohio, Inc. (LAWO)</b>	
Operational support .....	\$10,000
<b>National Trail Parks and Recreation District</b>	
NTPRD Chiller Ice Arena.....	\$10,000
<b>SpringForward</b>	
Operational support .....	\$100,000
<b>United Senior Services</b>	
Retired & Senior Volunteer Program.....	\$6,000
<b>Wittenberg University-The Susan Hirt Hagen Center for Civic and Urban Engagement</b>	
Civic Engagement Summer Internship Program .....	\$5,605
<b>WYSO Public Radio</b>	
Clark County Reporting on WYSO.....	\$5,000

**Total Civic Affairs** \$185,610







# An Angel Among Us

## Bethany Thompson Memorial Scholarship

Our family decided after we lost Bethany so early in her life and so suddenly, that we wanted to do a scholarship in her memory. A friend told me about the Springfield Foundation and as a family we decided it would be perfect. Each year, a scholarship would be given to a local student who shared Bethany's passion for either animals or God's ministry. It was decided to keep the scholarship to the school that Bethany attended, as this was the community that knew Bethany and who she was.

Bethany LouAnn Thompson was such an energetic and vivacious little girl. I remember Bethany always wanting to tell a joke or tease her family and friends somehow. She just didn't like to be teased back.

Bethany was always talking, especially in the car. She would make up games for us to play to help pass the time. One time, she wanted us to name a superhero for each letter of the alphabet. She loved superheroes and could talk endlessly about them. She decorated her room with superheroes and would watch the superhero TV shows and movies.

Bethany loved to talk and be around people. It certainly didn't seem for someone so young, that she would ever meet a stranger. She also loved school and attending church. If you asked Bethany if she was happy that school was going to be out soon she would tell you "no". She liked going to school to be with her friends and

to be around other people. Her teachers described Bethany as smart and intelligent and one that marched to her own tune. They thought she was very confident in her demeanor and appreciated that she would stand up for what she believed in. They described her as being polite, always saying "please" and "thank you" and commented on how thoughtful and caring she was. She would stop by teachers' rooms just to ask how their day was going and of course to say "hi". She loved going to church. Conveniently, she lived right across the street from a church for a few years. Bethany was maybe nine or ten and she would get herself up and ready and go across the street to church by herself. The people at church enjoyed Bethany and what an inspiration she was for them. Many people described her as an angel.

At the young age of three, Bethany got very sick and could not eat or drink. A tumor was found at the base of her skull. Surgery was done immediately to remove the tumor. Bethany had to endure many radiation treatments to be certain the cancer was eliminated. After all the radiation, an MRI was performed and Bethany was found to be cancer free. As a result of the surgery, an unavoidable nerve was cut, which controlled movements to half of Bethany's face. Bethany could only wink one eye and she had a half smile or a "crooked" smile. Bethany recognized that she looked different from other kids but that did not stop her from being so thoughtful, caring, polite and confident in her every day walk with others. She wished that she didn't look different from others, but knowing Bethany and the confidence and demeanor she displayed, one would not have guessed she felt inferior.

Our hope is that through this scholarship, Bethany will always be remembered by who she was and how she tried to overcome her obstacles. Bethany touched many lives in the few short years she was with us. Many times, we don't know the struggles others are enduring until it is too late. Don't take anyone for granted and show everyone love, just like Bethany did. An angel among us...



## Scholarship Info – By The Numbers

Total Awarded.....	<b>\$539,125</b>	Graham High School.....	<b>1</b>
Applications reviewed.....	<b>317</b>	Greenon High School.....	<b>18</b>
Number of new awards.....	<b>222</b>	Kenton Ridge High School.....	<b>10</b>
Value of new awards.....	<b>\$281,875</b>	Mechanicsburg.....	<b>1</b>
Number of renewals.....	<b>133</b>	Northeastern High School.....	<b>9</b>
Value of renewals.....	<b>\$257,250</b>	Northwestern High School.....	<b>8</b>
Average Scholarship.....	<b>\$1,519</b>	Shawnee High School.....	<b>17</b>
<b>Scholarship Awards</b>		Southeastern High School.....	<b>13</b>
Catholic Central High School.....	<b>3</b>	Springfield High School.....	<b>45</b>
Emmanuel Christian Academy.....	<b>4</b>	Tecumseh High School.....	<b>26</b>
Global Impact STEM Academy.....	<b>2</b>	Urbana High School.....	<b>5</b>
		Other Scholarship Types.....	<b>60</b>





# 2017 Legacy Society Inductees

**From left to right:** Tim and Trudy Bucey, Maggie Carroll, Drs. Jack and Sally Hutslar, Rita and Pete Lane.

Created in 2001, the Legacy Society is the Foundation's way of recognizing and thanking those who have shared their commitment to our community by making a planned or deferred gift, to the Springfield Foundation.

With a bit of planning today, you can ensure that the charitable causes that have grown important to you and your family over the years continue to be supported, in your name, long after you're gone. The Legacy Society is one of the ways the Foundation expresses its gratitude for your foresight and generosity.

## Legacy Society Members

- John S. Abma
- Mrs. Jean Acton
- Anonymous (5)
- Denise Antrobus
- Mr. and Mrs. Robert Bayley
- The Andy and Cathy Bell Family
- Pat and Ken Benne
- Gene Boomer and Dan Nobel
- Robert and Mary Brandstetter
- Bill and Deanna Brougher
- Charles A. and Susan E. Brougher
- Dr. Robert and Linda Brown
- Helen J. Brumfield
- Rick and Teresa Brumfield
- Gail O. Brunson
- Tim and Trudy Bucey
- Robert L. Burton Jr. C.P.A. and Doris C. Burton Ph.D.
- Rick and Linda Butler
- Bradley W. and Patricia K. Campbell
- Dan and Suzie Carey
- Maggie Carroll
- Randall M. and Tamara S. Comer
- Robert and Janet Conway
- Dr. and Mrs. Martin J. Cook
- David Cooke
- Lula and Lawrence Cosby
- Jenni and Brock Cox
- Cathy Crompton and Ross McGregor
- Joyce Dawson
- Dave and Chris Deitrick
- Earl and Janet Detrich
- John and Karen Detrick
- James and Sharon Doyle
- Joe and Lisa Dunn
- Bill and Dee Edwards
- Joan and Andy Elder
- Kit Field
- Patrick Field
- Dr. Larry and Kim Fish
- Gordon and Mary Flax
- Dick and Marie Flickinger
- Dave and Linda Foley
- Jeffrey and Ann Fortescue
- Bill and Debbie Fralick
- Stephen and Sandra Geib
- Mr. and Mrs. Peter Gus Geil
- Dr. James and Anna Jean Gianakopoulos
- Hal and Beth Goodrich
- Brice and Clara Young-Gordon
- Daniel and Rosemary Haemmerle
- Nancy Henderson
- Duane and Michelle Hodge
- Drs. Jack and Sally Hutslar
- Chuck and Sallie Ingle
- Andrew J. Irick
- Dr. Mabel E. Jackson
- Ron and Jean Jaeckels
- Larry and Sherry Kaffenbarger
- Mr. Charles Kip
- Robert and Sarah Koogler
- Gretchen Krafft
- Marilyn and Kevin Kreider
- Tom and Mary Ann LaHaise
- Rita and Pete Lane
- Patricia L. Lavy
- Hattie M. Lawson
- Adam and Mary Jo Leventhal
- Laurie and Eddie Leventhal
- Ms. Cheryl Lightle & Mr. Wade Skaja
- J. Michael and Shelley Lopez
- Michael Manoloff
- Mel Marsh and Rick Rutan Family Legacy
- Maureen and Joe Massaro
- Barbara F. Matthies
- Richard and Vicki Matthies
- Dr. Roland Matthies
- Lawrence E. and Carole A. McCoy
- Dan and Judy McGregor
- Jamie and Cameron McGregor
- Jim and Nancy McGregor
- Julie B. McGregor
- Robert G. Merkle
- Mary Sharon Miller
- Dorothy L. Minor
- Wayne and Kathy Moore
- Dr. Stanley and Phyllis Nedelman
- Mary Alice and Steve Neely
- Peter and Peggy Noonan
- Dan & Lois O'Keefe
- Plato and Tina D. Pavlatos
- Ben and Clare Perks
- Bishop Cecil and Roseann Pratt
- Dr. Michael and Robin Pfeil
- Dr. John W. and Sherril-ann Rechsteiner
- Kyle and Victoria Richards
- Polly Ricketts
- Kevin Rose and Marta Wojcik
- Kenneth and Mary Rush
- Gayle and David Sanders
- William N. and Jane N. Scarff
- Robyn Koch-Schumaker and Stephen Schumaker
- Dr. Jerry and Kay Shell
- Ms. Jessie L. Shropshire
- Dr. David and Cynthia Smith
- Don and Carolyn Smith
- Gail V. Smith
- Lester and Priscilla Smithers
- Jack and Tess Spencer
- Peter and Barbara Stafford Wilson
- Jake Studebaker and Alan Ladd
- Ted and Jodi Vander Roest
- Jim and Wendy Voorhees
- Ted and Helen Wallace
- Chet and Judy Walthall
- Michael and Vickie Whitfield
- Patty and John Young
- Robyn L. Zimmann
- Monte W. Zinn

For good. For ever.



# The **Parlato** Endowment Fund

The linkage of “Endowment Fund” with my name continues to awaken surprise. The term carries with it the idea of lavish resources. In contrast, my financial life has been characterized by modesty.

Following various jobs aimed at funding my graduate education, I embarked on a career of mid-level administration at two colleges, the latter being Wittenberg University for 26 years. Our household financial life was a typical middle class one of anticipating paychecks, budgeting carefully, and saving what we could. Not until the pre-retirement years did we manage a second car. “Investment?” That was for people with means far beyond ours. We did, however, have the advantage of Wittenberg’s matching contributions towards a TIAA retirement fund, which has provided the foundation for my senior years.

By no means poor. On the other hand, not remotely to be described as “wealthy”. Let’s just say typical for someone of my educational level. So...comes retirement in 2007 and what has become a relatively comfortable mode of life, and time to consider big questions, such as: “What should your life mean to those near you and to your community?” Particular after that life ends. Amid these musings I caught a TV interview with a major donor to various causes in the New York City area.

**Interviewer: “What motivates you to be so generous?” Donor: “Shrouds don’t come with pockets.”**

This pithy answer set alarm bells clanging. I could almost hear an admonitory voice: “At age 76 you need to stop dithering! It’s time-while you still have time-to do something meaningful and substantial with the resources you’ve been blessed with.”

Such thinking led to a meeting with Ted VanderRoest and consultation with my financial advisor, Scott Krizner. Conclusions? 1) My finances could handle a five-figure donation, and 2) a dedicated fund under the Springfield Foundation umbrella, in memory of my dearest wife, Rita and my big sister, Martha, both recently deceased, would serve as a productive instrument.

**And so, I have become part of something much larger than myself in both resources and efficacy.**

Nor does it hurt to note that in just one year under the Foundation’s stewardship, the Parlato Fund has increased more than 10% in value.

Having witnessed the radical churn characterizing local and national life in recent years, I chose to designate my fund as Unrestricted. New institutions and causes come into being; existing ones evolve, merge and even cease-all beyond our ability to predict. In my view, the Foundation Board consists of the widest minds in the community and continuously renew itself as history unfolds, both now and after my death. These people are far better able than I, acting alone and in a discrete point in time, to identify the most critical needs and opportunities that reveal themselves “as time goes by.” I am very pleased with my Foundation experience, and I suspect that Springfield includes many people whose circumstances resemble mine. If you’re one of them, I encourage you to consider the same path. Starting now.

**Paul Parlato**

# The **Millionaire** Next Door

Opening the mail to find a legacy gift from a stranger is one of the most humbling experiences when working for a nonprofit. No matter the size, knowing someone you had never met, trusted you to carry out their charitable wishes, is such a wonderful testament of the good work we do in Clark County.

Many times, the donor goes through life without drawing attention to their financial health. As their lives progress, these unsung heroes in our community make the selfless decision to give back, often with a gift through their estate.

One such legacy gift came in 2017 from the estate of Kathleen Wachsmuth. Kathleen was a retired Springfield City School teacher, where she taught for 37 years. She was involved with many organizations in our community, specifically those of Catholic affiliation and the Animal Welfare League. Kathleen had a passion for helping animals and

when she passed away, she gifted her estate to establish four endowments at the Springfield Foundation. Two benefiting students attending Catholic Central, one benefiting students pursuing a degree in education and one to finance the education of a local student studying veterinary sciences. To date, Kathleen's Veterinary Sciences scholarship fund awards the largest single scholarship at the Foundation. Each year, one deserving veterinary sciences student will be reminded of Kathleen's compassion for animals and generosity.

Administering these legacy funds is a daily reminder of why the Foundation is here. Founded by community leaders and governed by community members, the Springfield Foundation is a representation of Clark County as a whole. We are proud of the work we do and honored to be blessed with donors who want to give back.

*"I want to thank the Springfield Foundation for giving me such a generous scholarship. As many college students are, I was concerned about how I could possibly pay for my college expenses. Thanks to the Kathleen Wachsmuth Veterinary Medicine Scholarship, more than half of my financial obligations were taken care of for me. It truly does mean a lot to be awarded this scholarship, and I would like to thank the Springfield Foundation for their generosity to me, as well as to other financially struggling families with scholarship awards."*



**LEVI WOODE**



# The Benefits of Estate Planning

by **Tammi Angle**

**As a professional advisor and estate planning attorney, I frequently have discussions with clients about including The Springfield Foundation in their estate plans. These discussions often arise with clients in three main scenarios:**

- 1) When the clients do not have immediate family members who could be the primary beneficiaries of their estate, and who feel that the greater benefit would be to leave their estate to charity;
- 2) When the clients have a specific charitable gift or purpose in mind as part of an estate plan that also includes other charitable or non-charitable beneficiaries; and
- 3) When the clients want to create a scholarship fund for local college students.

Using The Springfield Foundation as a beneficiary of an estate plan has many benefits, including the following:

- Professional management of the funds donated;
- Administrative services for the funds provided by The Foundation's staff;
- The ability to keep the donor's family involved as part of the charitable giving process; and
- Security in knowing that the Foundation will always be there in the future to handle ongoing charitable gifts.

While tax reform at both the state and federal levels has reduced the need for most taxpayers to consider charitable giving as a means to reduce the impact of estate taxes in their estates, income tax considerations have now become more prominent, and charitable giving to The Foundation can also play an important role in that process.

Overall, charitable giving through estate planning using The Springfield Foundation as a component is an important and worthy consideration for all estate planners and their clients.

# The Women's Partnership Funds



**Daragh Porter**  
Chairperson,  
Women's  
Partnership Funds

Established in late 2009, The Women's Partnership Funds works to address ongoing barriers that women face as they try to achieve their full potential in the Springfield community by mobilizing the collective power and passion of women working together through philanthropy.

For the past 3 years, the Women's Partnership Funds has provided funding for Girls On The Run, an after school program that inspires young girls to be joyful, healthy and confident using a fun, experience-based curriculum which creatively integrates running. During this time, Girls On The Run has become an established nonprofit in our community serving more than 5 elementary schools in Springfield and Clark County.

We know that in order to have an impact, we must support multiple initiatives. The Advisory Board of the Women's Partnership Funds has been conducting a study over the last year to determine the most prominent needs of women and girls in Clark County. The results of this study will be used to pin point the next initiative the Women's Partnership will support beginning in 2019.

Along with new partnerships, the Women's Partnership Funds would like to welcome Daragh Porter as Chairperson for the Women's Partnership Funds. Daragh has been actively supporting the Women's Partnership financially for 5 years as a Founding Member. She read about the Fund in a Springfield Foundation report, got out her checkbook and this past year joined the Advisory Council.

As they welcome the new, the Advisory Council said goodbye to Cathy Crompton, Bridget Doane and Stephanie McCuiston. Cathy and Stephanie were part of the original group of women who established the Advisory Council, and Cathy served as the Chairperson from 2015-2017. Although no longer members of the Advisory Council, these women continue to actively support the Women's Partnership. The Advisory Council thanks Cathy, Bridget and Stephanie for their many years of service.

Daragh said, **"Supporting women and girls initiatives has been of interest to me for a long time, a key component to improving standards of living for so many."**



## African-American Community Family of Funds



The African American Community Family of Funds focuses its efforts on advancing minority causes and assisting African Americans in their educational pursuits. Founded in 2004 under the Springfield Foundation umbrella, The African American Community Family of Funds has grown tremendously over the past thirteen years. What started with \$25,000 in matching funds has grown into roughly \$400,000 and ten endowments. These funds are designated for a wide variety of causes, including scholarships for local African Americans, support for the Gammon House and local churches, among others. In 2004, The African-American Community Unrestricted Fund was established to provide resources for a broad range of existing and future African-American charitable needs throughout Clark County. Each year, approximately 5% of the balance of this fund is available to be distributed into the community to support charitable needs in the form of Grants to local non-profit organizations. Conscious Connect, Champion City Scholars, Muzika, Inc, Community Mercy Foundation, Gammon House, Clark State's PAC, Clark County Literacy Coalition and many others have been recipients. The beauty of the African American Community Family of Funds is the ability for other caring members of the community to join together to support causes they care about. Anyone can establish a fund with AACF or give to one of the ten funds already in existence.

**Alice Marshall**  
2017 AACF Honoree



**Lula Cosby**  
2017 AACF Honoree



**Sheila Rice**  
2017 AACF Honoree





# Financial Highlights

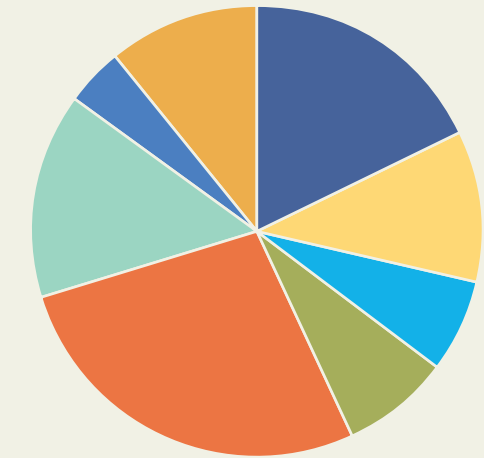
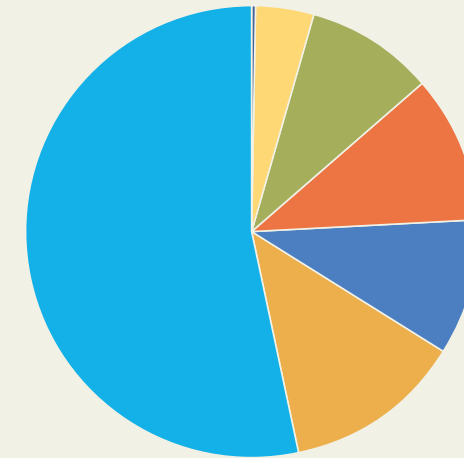
Our commitment is to maintain and grow the charitable assets entrusted to us. The financial information contained in this annual report is a condensed version of the Fiscal Year 2017 audited financial statements through December 31, 2017. A complete set of the audited financial statements, with accompanying notes and report from independent auditor, Clark Schaefer Hackett, is available at the Springfield Foundation office and on the Foundation's website.

Statement of Financial Position	FY 2017	FY 2016
Cash and cash equivalents	2,190,726	1,532,875
Receivables	57,352	172,397
Investments	82,348,102	74,316,064
Prepaid expenses	24,419	20,340
Furniture and equipment - net	13,615	16,408
Leasehold Improvements - net	17,121	18,744
<b>Total Assets</b>	<b>84,651,335</b>	<b>76,076,828</b>
<b>Total Liabilities</b>	<b>761,716</b>	<b>763,675</b>
Net Assets	83,889,619	75,313,153
<b>Total Liabilities &amp; Net Assets</b>	<b>84,651,335</b>	<b>76,076,828</b>

Combined Statement of Activity	FY 2017	FY 2016
<b>Revenues</b>		
Contributions	5,145,838	5,727,765
Investment Income	4,734,990	1,532,786
Increase in Appreciation on Investments	5,448,476	2,679,117
<b>Total Revenues</b>	<b>15,329,304</b>	<b>9,939,668</b>
<b>Expenses</b>		
Grants and Scholarships	5,832,112	3,937,195
Administrative Expenses	205,082	199,471
Fundraising Expenses	220,901	221,147
Programatic Expenses	494,743	651,428
<b>Total Expenses</b>	<b>6,752,838</b>	<b>5,009,241</b>
Increase in Net Assets	8,576,466	4,930,427
Net Assets Beginning of Year	75,313,153	70,382,726
<b>Net Assets End of Year</b>	<b>83,889,619</b>	<b>75,313,153</b>

# Investment Overview

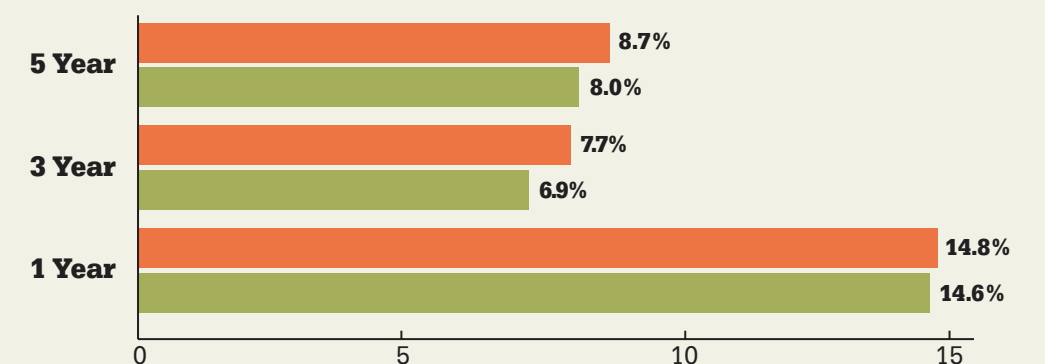
A majority of the Springfield Foundation's endowment funds is invested in a "Balanced Pool" portfolio, which is structured for long-term total return. To provide diversification and to reduce overall risk, the investments are divided into carefully defined asset classes. Assets are invested by professional money managers hired by the Foundation through a competitive process. The investment performance of each money manager is monitored by an independent investment consultant retained by the Foundation and overseen by the Foundation's Investment Committee. A list of our current investment managers is available at the Springfield Foundation office.



## Balanced Fund Investment Performance

As of December 31, 2017

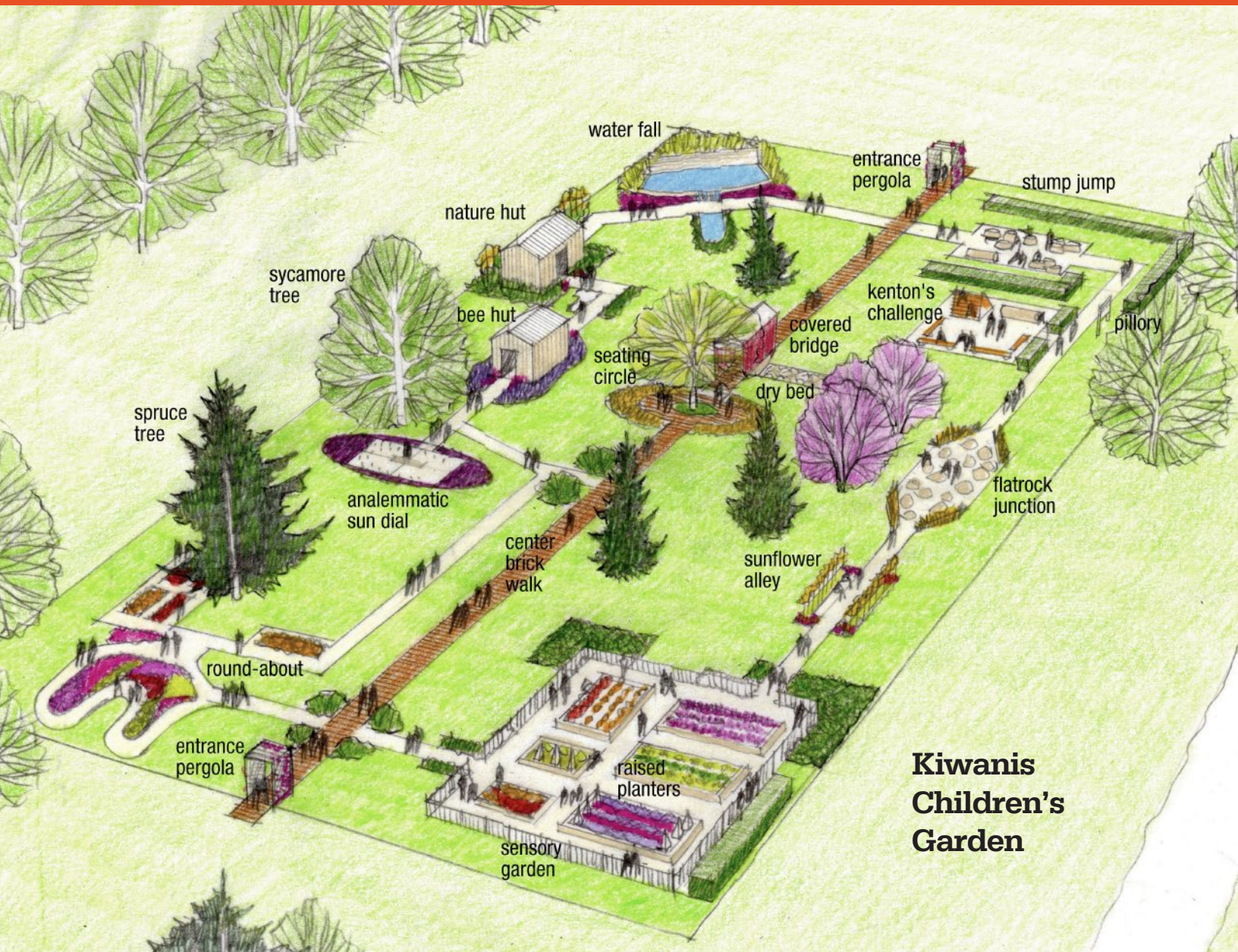
■ Benchmark  
■ Balanced Returns





# Creating Lasting Impact

In 2017, the following donors partnered with the Springfield Foundation to create permanent endowment funds. These new funds will have an impact forever and each builds upon our shared lives and passions.



**Kiwanis Children's Garden**



### Bethany Thompson Memorial Scholarship

Scholarship fund established to honor the memory of Bethany Thompson. Scholarship benefits graduating seniors of Triad High School to further their education. First preference given to students who have survived cancer, are planning to study ministry or go into the veterinary medicine field.



### Developmental Disabilities Endowment

Agency Fund Established for the unrestricted support of the Clark County Developmental Disabilities.

### Dr. Michael Yerian United Way Endowment for Clark County Residents

Designated fund for the unrestricted support of the charitable or education purposes of United Way of Clark, Champaign and Madison Counties for the benefit of Clark County Residents.



### Helen Parsons Iler Fund

Scholarship to assist graduates of Graham High School in Champaign County to further their educational pursuits.

### Iva Hinkle Unrestricted Endowment

Established through a gift from the estate of Iva Hinkle, this unrestricted Fund will provide grants for the ever changing needs of Clark County.



### Larry and Amelita Kaffenbarger Scholarship

Scholarship provides assistance for graduating seniors of Northwestern High School.



### Parlato Unrestricted Endowment

Unrestricted fund established by a gift from Mr. Parlato in memory of his late wife Rita Parlato and Sister, Martha Giordano.

### Kiwanis Children's Garden

Agency Fund established to provide ongoing support for the Kiwanis Club Children's Garden.



### Patrick E. Field Endowment Fund

Designated fund established to benefit the Springfield Museum of Art, Springfield Catholic Central High School and the Springfield Foundation.

### United Way KTH Endowment for Champaign County Residents

Designated fund established for the unrestricted support of the charitable or education purposes of United Way of Clark, Champaign and Madison Counties for the benefit of Champaign County Residents.



### Snyder Park Gardens and Arboretum Project Fund

Agency Fund established by Master Gardeners of Clark County for the ongoing support of the Snyder Park Gardens and Arboretum.



# Existing Endowment Funds

We are forever grateful to the donors who created these funds which provide for Clark County's long-term benefit and serves as the foundation upon which we Celebrate Life, Passions and Our Community.

## Unrestricted Funds

African American Community Fund  
 Margaret E. Baker Bequest  
 Weldin R. Baldwin Unrestricted Fund  
 Robert and Ruth Bayley Charitable Gift Annuity 2  
 Robert and Ruth Bayley Charitable Gift Annuity  
 Thelma Bayley Unrestricted Fund  
 Robert G. Bayley Trust  
 John Elden Bowman Unrestricted Fund  
 Charles A. Boyers Bequest  
 Mary Jo Hauk Bryan and Fred Bryan Unrestricted Fund  
 Ruby M. Caulfield Unrestricted Endowment Fund  
 Elisabeth R. Cole Unrestricted Endowment Fund  
 Clark County Community Fund for Arts and Culture  
 Clark County Community Fund for Civic Affairs  
 Clark County Community Fund for Conservation and Environment  
 Clark County Community Fund for Education  
 Clark County Community Health Fund  
 Clark County Community Human Services Fund  
 Juanita Jackels Eakins Bequest  
 Leo and Georgana Fischer Unrestricted Fund  
 Lenora Freshour Unrestricted Endowment Fund  
 The Fund for Clark County  
 Dr. James and Anna Jean Gianakopoulos Unrestricted Fund  
 Albert E. Goodman Unrestricted Fund  
 Arlin J., Barbara A., & David R. Grisso Memorial Fund  
 Daniel and Rosemary Haemmerle Annuity  
 Perry Halley Bequest  
 The Heckler Family Fund  
 Lester Held Trust  
 Iva Hinkle Unrestricted Endowment  
 Dwight W. Hollenbeck Trust  
 Initiative Fund  
 Philip Kepple Unrestricted Fund  
 Charles E. Kip Unrestricted Fund  
 Louise Leonard Unrestricted Fund  
 Martha and Arthur Lutz Unrestricted Fund  
 Springfield Foundation Merit Scholarship  
 Justine and William Montanus Unrestricted Fund  
 Parlato Unrestricted Fund  
 Paul A. Pence Memorial Fund  
 Isabelle F. Preston Unrestricted Fund  
 Charlotte and Harry Smith Unrestricted Fund  
 Social Service Bureau Fund  
 Springfield Savings Society Fund  
 M. Louise Steele Unrestricted Fund  
 Florence E. Stewart Bequest  
 Roy R. Sultzbach Bequest  
 Catherine C. Uhlman Bequest  
 Annie VanderLinde Unrestricted Fund

## Field of Interest Funds

Clark County Community Fund for Animals  
 Ralph L. Barlow Cancer Care Fund  
 Ralph L. Barlow Crippled Children and Retarded Fund  
 Amrit and Shashi Chadha Charity Fund  
 Springfield Children's Zoo Fund  
 Dorothy Ella Dowell Fund  
 Robert M. Farish Family Building Trades Fund  
 Greater Springfield Day Care Center Children's Fund  
 Mad River Valley Dental Society Fund  
 Sylvia K. Mendelson Fund  
 Helen and Huston Moores Fund  
 Physical Disabilities Fund  
 Polly D. Ricketts Animal Welfare Fund

James and Sonya Ryhal Performing Arts and Education Fund  
 Hilda H. Seaman Memorial Fund  
 The Dr. David D. Smith Maternal Health Care Fund (Deferred)  
 Louise Staley Fund  
 Howard L. Templin Endowment Fund

## Designated Funds

Dr. Barbara J. Abma Memorial Fund  
 Anonymous Charitable Gift Annuity 8  
 Anonymous Charitable Gift Annuity 6  
 Charles L. Bauer Fund  
 Robert B. and Sally Ann Beam Endowment  
 Charles A. Boyers Children's Home Fund  
 Dr. Robert and Linda Brown Endowment Fund  
 CIC - Career Alliance of Clark County  
 Michael H. & Pauline N. Chakeres Endowment Fund  
 Elisabeth R. Cole Designated Endowment Fund  
 Pauline L. Colliver Designated Endowment Fund  
 Janet A. Conway Insurance Fund  
 Dr. Martin J. and Mary Ann Cook Fund  
 Ann P. Cooke Youth Symphony Memorial Fund  
 Paul U. Deer Children's Home Fund  
 DJFS Special Project Fund  
 Warren G. Elliott Fund  
 Patrick E. Field Endowment  
 Leo and Georgiana Fischer Designated Fund  
 David Foley Insurance Fund  
 Jessie Foos Baker Operating Endowment Fund  
 Dr. James and Anna Jean Gianakopoulos Fund  
 James Gianakopoulos Insurance Fund  
 Louise and Albert Goodman Fund  
 Mina H. Hadley  
 Hare Cookie Lady Fund  
 Hertzler House Endowment Fund  
 Laura E. Jacobs Fund  
 Barbara Deer Kuss Nursing Endowment Fund  
 Evangeline Panos and Catherine Nina Mantis Fund  
 Bessie B. Martin Fund  
 Martin Family Fund  
 Roland and Maxine Matthies Designated Fund  
 Lawrence E. and Carole A. McCoy Endowment Fund/  
 The Lawrence E. and Carole A. McCoy Scholarship Fund(Deferred)  
 Harris E. Miller  
 Dorothy M. Mumma Tuition Loan Fund  
 Northwestern-Clark HS Class of 1965  
 Education Enrichment  
 Ben Wheldon Perks Annuity  
 Ed Pickering Memorial Fund  
 The Friends of Piqua Place Endowment  
 Harold S. Pollens Charitable Trust Fund  
 Dennis Porter Annuity  
 Lucie M. Robbins Fund  
 Sig & Ilse Sander Festival Dinner Fund  
 Smilin' Bob Memorial Heart Attack Fund  
 David and Cynthia Smith Endowment Fund  
 The David D. and Cynthia Smith Community Benefit Fund (Deferred)  
 Carolyn K. Smith Insurance Fund  
 NTPRD Veteran's Memorial Park Renovation Project Fund  
 John A. and Elizabeth Greenawalt Wagner Designated Fund  
 John H. and Virginia S. Warren Endowment Fund  
 Mina E. Newman White Fund  
 Donald and Dorothy Wiegel Fund (Balanced)  
 Donald and Dorothy Wiegel Fund (Income)  
 Springfield Youth Foundation Endowment Fund  
 Monte W. Zinn Insurance Fund

## Donor Advised Funds

John S. Abma Endowment Fund  
 Anonymous Fund #7  
 Edward Tague Bell Endowment Fund  
 Norman and Mildred Carey Family Endowment Fund  
 Elisabeth C. Carpentieri Endowment Fund  
 Chakeres Lifeline Fund  
 The D.O.V.E. Fund  
 Harold Austin and Elizabeth Danielle Chovan Goodrich Fund  
 Daniel and Rosemary Haemmerle Endowment Fund in Memory of Janice and Stephen  
 Roy and Kathryn Hickes Family Advised Fund  
 L. Edwin and Mary C. Hoppes Memorial Fund  
 The Larry and Amelita Kaffenbarger Endowment Fund  
 Patricia and Roy Kohl Family Fund  
 Edward Leventhal Family Advised Fund  
 Todd & Gabriele Leventhal Family Fund  
 Betty Fund - Cheryl Lightle  
 Willie D. Fund - Cheryl Lightle  
 Robert N. and Ella M. Lupper Fund  
 Ruth B. and Thomas F. Mackey Endowment Fund  
 Roland and Maxine Matthies Family Advised Fund  
 Daniel P. and Judith S. McGregor Family Advised Fund  
 James B. McGregor Family Advised Fund  
 Christopher Charles Miller Memorial Endowment Fund  
 The Noonan Foundation  
 Pearl Endowment  
 Norman A. and Ann N. Pearson Fund  
 Timothy Price Memorial Family Fund  
 Richard and Ann Rice Family Fund  
 Marion B. Robertson Fund  
 Rex H. Rowand Endowment Fund  
 Samuelsson Family Foundation  
 The Linda S. Sanders Endowment Fund  
 Shanley Foundation Endowment Fund  
 PCS Advised Fund  
 Chelsea Valentine Rainbow Trust Fund  
 Nancy C. Vanderglas Donor Advised Fund  
 George M. and Pamela A. Walker Family Fund  
 Hattie Gordon Willens Memorial Fund  
 Raymond L. Woeber Donor Advised Fund  
 Women's Partnership Funds

## Scholarship Funds

The Springfield Branch AAUW Helen L. Krout Memorial Scholarship  
 Kirk Andorfer Memorial Scholarship Fund  
 Anonymous Fund #9  
 Chase Baumgardner Memorial Scholarship Fund  
 Lewis and Jeanne Bookwalter Scholarship Fund  
 William R. Brannick Memorial Scholarship Fund  
 Brett Arthur Mansfield Memorial Scholarship Fund  
 Charles A. Brougher Memorial Scholarship Fund  
 Dr. Robert and Linda Brown Scholarship Fund (Deferred)  
 Helen J. Brumfield Scholarship Fund  
 Mary Jo Hauk Bryan and Fred H. Bryan Scholarship Fund  
 Albert H. Carr Memorial Fund  
 Richard A. & Kay H. Cartmell Memorial Scholarship Fund  
 Catholic Charities Martha Harrison Memorial Scholarship Fund  
 City Community Hospital School of Nursing Alumni Scholarship Fund  
 Clark County Medical Society Alliance Nursing Scholarship Fund  
 Pauline L. Colliver Endowment  
 Richard "Pup" Conklin Motorcycle Mechanics Scholarship Fund

John and Ethel Corbitt Memorial Scholarship Fund  
 Barbara A. Beery-Dudrow Memorial Scholarship Fund  
 Ron Duncan Scholar Athlete Scholarship Endowment Fund  
 Virginia Edmondson Memorial Scholarship Fund  
 Education Options Scholarship Fund  
 Edwards Family Scholarship Fund  
 George Tehan Fischer Memorial Scholarship Fund  
 Carl & Frances Fisher Scholarship Fund  
 Springfield Fortnightly Musical Club Scholarship Fund  
 Charles L. Fox Family Educators Fund  
 Lydia E. Freking Fund  
 Frank Giampetro Scholarship Fund  
 Waverly Glover Scholarship Fund  
 Louise and Albert Goodman Scholarship Fund  
 Phil Chakeres Scholarship Fund of the Greek Orthodox Church  
 Sarah J. Hammond Memorial Scholarship Fund  
 D. Michael Harber II Memorial Scholarship Fund  
 Hare Cookie Lady Scholarship Fund  
 Ralph H. & Kathryn Ann Harman Memorial Scholarship Fund  
 Dr. Edna Jean Harper Scholarship Fund  
 Ed Hart Memorial Engineering Scholarship Fund  
 William S. and Mary M. Haynes Scholarship Fund  
 Nancy J Hemry Class of 1951 Memorial Scholarship  
 Historic South High School Class of 1968 Scholarship Fund  
 Home City Federal Savings Bank, Julia Ward Turner, Scholarship  
 Hoppes International Study Scholarship Fund  
 Helen Parsons Iler Fund  
 Merlin G. Johnson Scholarship Fund  
 Helen Kaffenbarger Memorial Scholarship  
 Larry & Amelita Kaffenbarger Scholarship  
 Kaffenbarger Truck Equipment Company Northwestern Scholarship Fund  
 Patricia and Roy Kohl Family Scholarship Fund  
 Judy Wile Kossoff Memorial Scholarship Fund  
 Richard E. Kramer Scholarship Fund  
 Fred and Maxine Leventhal Scholarship Fund  
 Les Femmes des Charities Scholarship Fund  
 E. Lucille Ginn Scholarship Fund of the LINKS  
 Kathryn A. Littleton Scholarship Fund  
 Frank C. Long Scholarship Fund  
 Michael Manoloff Scholarship Fund  
 Angela Arnold Maras Memorial Scholarship  
 Mary Masters Scholarship Fund  
 Barbara F. Matthies Scholarship Fund  
 John Minchin UAW Scholarship Fund  
 Miner L. Moore Memorial Scholarship Fund  
 Mu Chi Chapter of Omega Psi Phi Fraternity Scholarship Fund  
 Dorothy M. Mumma Scholarship Fund  
 The F. Leonard Murphy Scholarship Fund  
 Charles V. and Helen H. Myers Scholarship Fund  
 New North Street AME Scholarship Fund  
 Northwestern Alumni Scholarship Fund  
 Penwell Trust Fund  
 Myron & Helen Porter Scholarship Fund  
 Brent D. Ream Memorial Scholarship Fund  
 Dorothy Z. and Howard N. Scarff Memorial Scholarship Fund  
 Patricia Sharp Memorial Scholarship Fund  
 Mary Ellen Shockey Memorial Scholarship Fund  
 SHS Scholarships Program Fund  
 D. Suzanne Smith Memorial Scholarship Fund  
 South Charleston Community Club Scholarship Endowment Fund  
 Jennifer Lou Spencer Memorial Scholarship Fund  
 Springfield News-Sun Ralph Doyle Endowed Scholarship Fund  
 Tom Spurgin Memorial Scholarship Fund  
 Nelson and Belva Stallsmith Scholarship Fund  
 Gary Edwin Stevenson Memorial Scholarship Fund  
 Thelma Streber Memorial Scholarship Fund  
 Sutphen Corporation Scholarship Fund

Tecumseh Education Foundation / John Sip Music Scholarship Fund  
 Kyle A. Thomas Memorial Scholarship Fund  
 Bethany Thompson Memorial Scholarship  
 Coach Al Turner Memorial Scholarship Fund  
 Kathleen Wachsmuth Catholic Central Elementary Tuition Assistance Fund  
 Kathleen Wachsmuth Education Scholarship Fund  
 Kathleen Wachsmuth Catholic Central High School Tuition Assistance Fund  
 Kathleen Wachsmuth Veterinary Medicine Scholarship  
 Hannah Christine Young Memorial Scholarship Fund  
 Tecumseh High School Class of 1969 Howard Zeller Scholarship Fund

## Agency Funds

Anonymous Fund Number 10 Endowment Fund  
 Springfield City School District Auditorium Endowment Fund  
 B-W Greenway Community Land Trust Endowment Fund  
 Bethie's Sprayground in Snyder Park Endowment Fund  
 Don Bishop Education & Training Endowment Fund  
 Tecumseh Council, Boy Scouts of America Endowment Fund  
 The Garth O. Briggs Scholarship Fund of the Tecumseh Education Foundation  
 Catholic Charities of Southwestern Ohio Endowment Fund  
 Clark County Heritage Center Endowment Fund  
 Champaign Aviation Museum Endowment Fund  
 Champaign Land Preservation Fund  
 Community Hospital Health Services Foundation  
 CHF- Bruce Mayer Cardiac Endowment  
 CHF-Cardiac and Respiratory Fund  
 CHF - Harriet Cousar Scholarship Fund  
 CHF- John Harter Scholarship Endowment Fund  
 CHF- Karl and Bertha Mack Schreiber-Rom Endowment Fund  
 CHF - Nursing Scholarship Fund  
 CHF- Dr. Edwin A. Roberts Scholarship Fund  
 CHF- Stella Rubart Scholarship Fund  
 CHF- School of Nursing Fund  
 CHF- Ann Somers Field Scholarship Fund  
 CHF- Springfield Business & Professional Women's Scholarship Fund  
 CHF- Marybelle Hodge Tembreull Scholarship Fund  
 CHF- Kierstin Nicole Willets Scholarship Endowment Fund  
 Community Health Foundation Endowment Fund  
 Covenant Presbyterian Church Endowment Fund  
 The Champaign Residential Services Inc., Endowment Fund  
 Dayton Children's Hospital  
 Developmental Disabilities Endowment  
 Elderly United Endowment Fund  
 First United Church of Christ Endowment Fund  
 Friends Care Community (FCC) Endowment Fund  
 Gary Geis Dance Company Endowment Fund  
 Glen Helen Association Endowment Fund  
 Glen Helen Association Raptor Center Endowment Fund  
 Good Shepherd Evangelical Lutheran Church Reserve Fund  
 Good Shepherd Evangelical Lutheran Church Endowment Fund  
 Grace Evangelical Lutheran Church Endowment Fund  
 Greenon Local School District Endowment Fund  
 Grimes Flying Lab Endowment Fund  
 Hartman Rock Garden Endowment  
 High Street United Methodist Church Cordes Fund  
 Highlands United Church of Christ Endowment Fund  
 Highlands United Church of Christ Charlotte L. and William C. Henning Endowment Fund  
 Hollandia Botanical Gardens Endowment Fund  
 Jane P. B. Hollenbeck Ridgewood School Endowment Fund

The Jane P.B. Hollenbeck Ridgewood School Capital Endowment Fund  
 OIC Marti Kiser Fund  
 Dan Ackerman Memorial Fund of The Kiwanis Foundation  
 General Operating Fund of the Kiwanis Foundation  
 Kiwanis Foundation Charlotte L. and William C. Henning Endowment Fund  
 Scholarship and Student Loan Fund of The Kiwanis Foundation  
 Conrad Turner Memorial Fund of the Kiwani Foundation  
 Clark County Public Library Endowment  
 Logan County Developmental Disabilities Foundation Fund  
 Catholic Charities-Martha Endowment Fund  
 Mental Health Foundation's Endowment Fund  
 Mental Health Services of Clark and Madison Counties Inc., Endowment Fund  
 Springfield Museum of Art Endowment Fund  
 The National Trail Parks and Recreation District Endowment Fund  
 Nehemiah Foundation Endowment  
 The Glenn A. Harper Endowment Fund for Preservation on the Ohio Historic National RoAD  
 Marguerite Morris, Project Woman Endowment Fund  
 Ridgewood Restricted Corpus Endowment Fund  
 Ridgewood Unrestricted Endowment Fund  
 The Riding Centre Association Endowment Fund  
 Rotary Foundation Barlow-Webb Disability Fund  
 Rotary Foundation Cordes Disability Fund  
 Rotary Foundation Fox Scholarship Fund  
 Rotary Foundation McKinney Disability Fund  
 Rotary Foundation Nurse Scholarship Fund  
 Rotary Inclusive Playground Maintenance Endowment Fund  
 Rotary Foundation Smith-Barlow Disability Fund  
 Rotary Foundation Unrestricted Scholarship Fund  
 Rotary Foundation Welfare Reserve Fund  
 Rotary Foundation Fund  
 Second Harvest Foodbank Endowment Fund  
 Rabbi Marianne L. Gevirtz Temple Shalom Fund  
 John Smarelli Scholarship Fund of the Springfield Symphony Orchestra  
 Snyder Park Gardens and Arboretum Project  
 Springfield Arts Council Endowment Fund  
 Summer Arts Festival Unrestricted Fund  
 Springfield Symphony Foundation Bryan Endowment Fund  
 Springfield Symphony Foundation Conductor's Endowment Fund  
 Springfield Symphony Foundation Endowment Fund  
 Springfield Symphony Foundation Littleton Endowment Fund  
 TAC Enterprise Endowment Fund  
 Tecumseh Land Trust Endowment Fund  
 United Rehabilitation Services of Springfield Endowment Fund  
 Dr. Michael Yerian United Way Endowment for Clark County Residents  
 United Way of Clark, Champaign and Madison Counties Endowment Fund (#2)  
 Robert D. Jackson United Way Endowment Fund  
 United Way KTH Endowment For Champaign County Residents  
 United Way Endowment Fund  
 Urbana University Fund  
 The Veterans Park Endowment Fund  
 WellSpring Endowment Fund  
 Westcott Education Fund  
 Westcott Endowment Fund  
 Yellow Springs Senior Center Endowment Fund  
 Springfield Family YMCA Fund





# Contributors to New and Existing Endowment Funds

The Springfield Foundation wishes to thank our many thoughtful donors whose generosity over the past year helped support a wide range of services and programs in our community. **THANK YOU** for making a difference and for sharing our Passions and Our Community.

Dr. Joyce Abma and Mr. Paul Carr  
Mr. Phillip E. Acles  
Mr. and Mrs. James E. Acra  
Ms. Miste Adams  
Mr. and Mrs. GS Adebisi Adegbile  
Advanced Mechanical Services, Inc.  
AFP Foundation for Philanthropy  
A G Samuelson Inc\*  
Michael A. Ahern\*  
Mr. Douglas Aker  
Dr. George Anderson  
Mr. and Mrs. Ralph E. Anderson  
Mrs. Thelma C. Anderson  
Mr. and Mrs. Roger Angle\*  
Anonymous Donor\*  
Anonymous Gift\*  
Ms. Cathy E. Appel  
Mrs. Zaida C. Aquino  
Ms. Mildred Archie  
Mr. and Mrs. Nicholas D. Ark  
Ms. Patti S. Ark  
Mr. and Mrs. Randall W. Ark  
Armloy of Ohio, Inc.  
David and Phyllis Arthur\*  
Ashgard Group  
Mr. Jimmy Ashley  
Ms. Sue H. Atchley  
Auglaize County Historical Society  
B.Z.B. LTD  
Rosalyn K. Bacon  
Ms. Virginia A. Bageant\*  
Ms. Lugene Bailey  
Mr. David Baird  
Ms. Doris A. Baker-Ross  
Pat and Duane Baker\*  
Ms. Sally Baker  
Baker Krizner Financial Planning  
Mr. and Mrs. Todd Baldrige  
Ms. Marjorie Ball  
Mr. Conrad A. Balliet  
Mr. and Mrs. Robert N. Bare  
Mr. and Mrs. Andrew D. Barlow  
Mr. Lester Barnhart  
Ms. Marjorie June Barnhart  
Mrs. Melinda A. Barnhardt-Jud and  
Mr. Henry G. Jud  
Mr. and Mrs. Ronald A. Barone  
Mr. and Mrs. Daniel Barksdale\*  
Jon Bartell\*  
Mr. Fred Bartenstein  
Barbara Barth\*  
Mr. Phil Bartley  
Mr. and Mrs. David Bartos  
Mrs. Irma Bass  
Ms. Linda S. Bass  
Bass Smith Connection  
Mr. and Mrs. Michael L. Bassell  
Mr. and Mrs. Robert D. Bateman  
Dr. and Mrs. Rodney E. Batie  
Mr. Doug Baumle  
Ms. Laura A. Baxter  
Mr. Robert G. Bayley  
Mrs. Ruth Bayley  
Mr. Mark Bear  
Mr. and Mrs. Elmer M. Beard  
Mr. Josh Beaudian

Ms. Joy Becker  
Andy and Cathy Bell\*  
Eddie and Heidi Bell  
Mr. George R. Benfield  
Ken and Pat Benne\*  
Jeanne W. Bennett\*  
Mr. and Mrs. Timothy B. Berlekamp  
Mr. and Mrs. William Berry\*  
Dolores Berrien\*  
Martha Jo Berschet\*  
Mr. and Mrs. Philip J. Bertemes  
Mr. and Mrs. Ralph Betters  
Ms. Irene Bilal-Engle  
Bill and Colleen Birch\*  
Mr. and Mrs. Michael L. Blackburn  
Mr. and Mrs. Gaylen Blackwell  
Mr. Richard M. Blatt  
Mr. Christopher L. Blizard  
Dr. and Mrs. Thomas Board, Jr.  
Mr. and Mrs. Brett C. Boblitt  
Ms. Lexie Boblitt  
Mrs. Lewis Bookwalter  
Ms. Patricia Bookwalter Finnigan  
Mr. and Mrs. Rick Boop  
Mr. and Mrs. Robert L. Borley\*  
Mr. and Mrs. Brock Bowen  
Bowman Chevrolet  
Mr. and Mrs. Bradley Boyer\*  
Mr. David C. Boyer  
Ms. D. Virginia Boyer  
Mr. and Mrs. R.W. Brandstetter  
Mrs. Jeanne R. Braun  
Ms. Thelma Bray  
Mr. Monte Brigham and  
Ms. Jessica Brigham  
Mrs. Geneva Brisbane  
Mr. and Mrs. Orville L. Brock  
Mr. Richard P. Broderick  
Ms. Ethel Bronston\*  
Mr. and Mrs. Robert O. Bronston\*  
Bill and Deanna Broughe\*  
Mr. and Mrs. Richard Broughe\*  
Mrs. Susan A. Broughe\*  
Mr. and Mrs. Anthony L. Brown\*  
Ms Grace A. Brown  
Mr. and Mrs. Harry Brown  
Mr. John A. Brown Jr\*  
Mrs. Linda Brown  
Mr. Kenny Brown  
Ms. Pauline R. Brown  
Rev. and Mrs. Ernest C. Brown Sr  
Mr. Randy Brown  
Mr. and Mrs. Rick Brumfield\*  
Mr. and Mrs. Wilbur Bryant  
Buckeye Diamond Logistics, Inc.  
Mr. and Mrs. Stamatis Bulugaris  
Sam and Barbara Burcham\*  
Ms. Linda L. Burns  
Ms. Marjorie L. Burton  
Mr. Rick A. Burton  
Robert L. Burton Jr., CPA  
Ms. Rita Buturain\*  
Butler Consulting  
Mr. and Mrs. Richard Butler\*  
John R. Butz and Joan R. Butz  
Campbell Financial, LLC

Ms. Jane A. Cape  
Dan and Suzie Carey\*  
Hon. and Mrs. Richard Carey  
Mr. and Mrs. Kenneth W. Carlton\*  
Ms. Barbara D. Carman  
Ms. Margaret Carroll  
Mr. Darnell Carter  
Ms. Helen H. Carter\*  
Vivian Carter\*  
Mrs. Nettie Carter-Smith  
Mrs. Pauline Chakeres  
Philip and Mandy Chakeres\*  
Champaign Cruisers  
Champaign Land Preservation  
Champion City Limosine  
Ms. Edna M. Chapman  
Ms. Margaret A. Chapman\*  
Mr. Clay Chester  
LCDR and Mrs. James R. Christian RET  
Citizens National Bank  
City of Springfield  
City-Community Hospital School of  
Nursing Alumni  
Mr. Robert E. Clark\*  
Mrs. Rosemary L. Clark  
Clark County Agricultural Society\*  
The Clark County Board of  
Developmental Disabilities  
Clark County Medical Society Alliance  
Clark State Community College  
Mr. Roger W. Clem  
Ms. Janet Click  
Dr. and Mrs. Gene A. Clifton\*  
Tim and Cathy Coffelt\*  
Cole, Acton, Harmon, Dunn\*  
Mr. and Mrs. Steven Colliflower  
Mr. and Mrs. Alan E. Collins  
Randall and Tamara Comer\*  
Committee For Ferguson  
Commonwealth Financial Network  
Community Health Foundation\*  
Community Improvement Corporation of  
Spfld and Clk Cy\*  
Mr. and Mrs. James K. Connolly  
Conroy Funeral Home\*  
Ms. Joan M. Corbitt  
Lula and Lawrence Cosby\*  
Ms. Gail J. Cottrell  
Mr. and Mrs. Rick Brock R. Cox\*  
Mrs. Joan Cox  
Mr. and Mrs. Charles Crabtree  
Ms. Patricia Cramer\*  
Ms. Susie M. Crawford-Carter\*  
Mr. Matt Croci  
Dr. Cathy Crompton  
Steve and Kris Culp\*  
Ms. Bobbi R. Cunningham  
Custom Promotions, Inc.  
Mr. Harley F. Daily Jr.  
CMSGT and Mrs. Marvin Dale\*  
Ms. Dorris J. Daniel  
Mr. and Mrs. Gregory D. Daniels

Mr. and Mrs. Michael C. Dawson\*  
Mr. and Mrs. Jacob T. Dean  
Jenny L. Deer\*  
Mr. and Mrs. David Deitrick\*  
Mrs. Ardath S. Dellapina  
Della Selsor Trust  
Mr. and Mrs. Jeff J. Delk  
Mr. and Mrs. Dominick J. Demana\*  
Dr. and Mrs. Joseph Demeter\*  
Mr. and Mrs. Kenneth Dennison  
Mr. and Mrs. Dennis W. Dern  
Art and Sylvia Derr\*  
Mr. and Mrs. Tim Detrick  
Mr. and Mrs. B. Lynn Dickerson  
Mr. Elmo R. Dillman  
Mr. and Mrs. Cuyler Doane  
Mr. and Mrs. Andre Doolittle\*  
Ms. Antonia Dosik  
Mr. and Mrs. Tom Dotson  
Ms. Bonita Y. Dover  
Mr. Shannon Doyle  
Donna Jean Driscoll\*  
Mr. and Mrs. James R. Drum  
Dr. and Mrs. Jerald S. Dudley  
Mrs. Karen Duncan\*  
Mrs. Emma Dungey  
Ed and Margaret Dunn\*  
Mr. and Mrs. Larry W. Durfey  
Dr. and Mrs. Michael DuVall\*  
Ms. Alice Ebbert  
Ms. Janet W. Ebert  
Katherine L. Eckstrand\*  
Edward Jones Investments  
Mr. Michael Edwards  
Mr. and Mrs. Robert Edwards  
Mr. and Mrs. William E. Edwards  
Linda Egger  
Mr. and Mrs. John L. Eichelberger  
Andy and Joan Elder  
Joan E. Elder  
Mr. and Mrs. Kenneth M. Elder\*  
Mr. Tim Elliott  
John and Carol Emerich\*  
Enon Greenon Alumni Association  
Ms. Linda M. Ervin  
David and Virginia Estrop  
Ms. Carol Eubanks  
Dr. and Mrs. J. Arthur Faber\*  
Mr. and Mrs. Percy M. Fagans  
Family Physicians of Springfield  
Far North Computers, LLC  
Mr. and Mrs. Michael J. Faust  
John S. Federer  
Louis W. Feldmann\*  
Ms. Jill A. Fenner  
Mr. and Mrs. J. Douglas Ferguson  
Mr. Roger D. Ferryman  
Mr. and Mrs. Basil Fett  
Mr. Patrick E. Field\*  
Mr. and Mrs. Stephen C. Field\*  
Ms. Shirley Finney  
Mr. Sean Finnigan  
Dr. William Fippin  
First Baptist Church - JAM  
Mr. David Fish  
Larry and Kim Fish\*

Ms. Lauren E. Fish  
Miss Marcia Flax  
Mr. and Mrs. G. Richard Flax  
Dick and Marie Flickinger\*  
Ms. Barbara J. Florence  
Mr. and Mrs. Gregory Flax\*  
Mrs. Ann M. Flory  
Florence Realty\*  
Mr. William W. Fobes II  
Dave and Linda Foley\*  
Ms. Peg Foley  
Eddie and Wendy Ford\*  
Mr. and Mrs. Jerry L. Ford II  
Peter and Amy Foreman\*  
Ann and Jeffrey Fortescue\*  
Ms. Marlene Foster  
Mr. and Mrs. William Fralick\*  
Dr. and Mrs. Michael L. Frandsen  
Mr. and Mrs. Gary R. Frasco  
Mr. James Freed\*  
Ms. April Freville  
Friends Care Community  
Friends of the Hartman Rock Garden  
Mr. and Mrs. Edward H. Fulton  
Al and Bonnie Gabbard\*  
Dr. and Mrs. Tarsem Garg  
Ms. Eugenia K. Garner  
Gladys R. Garrett  
Mr. Rick Garver  
Mr. and Mrs. Keith W. Garvin  
Mr. and Mrs. James E. Gay\*  
Mr. and Mrs. P. Gus Geil\*  
Ms. Rae A. Geake  
Rev. Carol Gesalman  
Mr. and Mrs. Frank Giampetro  
Art and Alex Gianakopoulos  
Mr. and Mrs. Demitrios Gianakopoulos  
Dr. James G. Gianakopoulos\*  
Dr. and Mrs. Jim Gifried\*  
Mr. Jerry Gilbert  
Mr. and Mrs. Matt Gilkerson  
Mr. and Mrs. Curtis Gillespie\*  
Mr. David A. Gilbert  
Rev. and Mrs. David L. Glauner  
Gleam, Inc.\*  
Mr. Waverly Glover  
Mr. and Mrs. Harold A. Goodrich  
Mr. Steven Goens  
Mr. and Mrs. Darren Gosney  
Ms. Rebecca L. Gorby  
Grace Evangelical Lutheran Church  
Mr. and Mrs. Robert F. Graham  
Mr. and Mrs. Marshall Grant  
Mr. and Mrs. Eric D. Gray  
Mr. and Mrs. Jordan R. Gray  
Mr. and Mrs. Kenneth W. Green  
Mr. Ronald W. Green  
Mr. and Mrs. R. Scott Griffith\*  
Mr. and Mrs. Robert F. Griffith  
Mr. Mark Grimes\*  
Mr. and Mrs. Wesley C. Grimm  
Mrs. Cindy Griffin  
Mrs. Peggy L. Griffiths-Delong and  
Mr. Danny K. Delong  
Greater Springfield Chamber  
of Commerce\*  
Greater Springfield U.A.W. CAP Council  
Jay Greenland\*  
Ms. Debbie Grim  
Grimes - Kohl VFW Post 1031  
Grimes Kohl VFW post 1031 Auxiliary  
The Guarantee Insurance Agency Co\*  
Mr. and Mrs. Peter J. Hackett\*

Mr. Robert D. Hackett\*  
Mr. and Mrs. Daniel Haemmerle\*  
Ms Margaret A. Haemmerle  
Mr. Paul Hagelberg  
Mr. and Mrs. Alvin Hall  
Ms. Dora Hall  
Mr. and Mrs. William T. Hallmark  
Mr. and Mrs. Daniel L. Hamilton  
Mr. Preston Hampton\*  
Mr. and Mrs. Jim F. Hanna  
John Harbage Farm  
Keith and Carol Harbaugh\*  
Harding Road Pharmacy Inc  
Mr. and Mrs. Jason J. Harding  
Dr. Edna Jean Harper and  
Mr. Preston Mack  
Mr. and Mrs. Donald T. Harris\*  
Mr. Ryan Harris  
Mr. and Mrs. Douglas E. Hart  
Ms. Lynda M. Hart  
Mr. and Mrs. Richard Hart  
Miriam Harshaw  
Mrs. Nannie M. Harshaw  
Mr. and Mrs. Leonard Hartoog  
Ms. Karen Hasting  
Hauck Bros., Inc.  
Jack and Jackie Hawkes\*  
Mr. and Mrs. Stephen Hay  
John and Marlene Hays\*  
Ms. Sharon M. Hayes  
Mr. and Mrs. Dean W. Hazelton  
Mr. Bruce E. Heckman and  
Ms. Ann D. Cooper  
Jim and Bonita Heeg\*  
Mr. Nick Heimlich  
Ms. Ann Hellmuth\*  
Ms. Catherine Hellmuth\*  
Mr. Daniel W. Hennigan\*  
Ms Carolyn L. Henry  
Mr. Dale Henry, Sr.  
Mr. and Mrs. Ernest Henry  
Ms. Ramona C. Henry  
Mr. and Mrs. James H. Hensley  
Mr. William J. Hester  
Kristin and Richard Hibbett\*  
Mr. and Mrs. William Hicks  
DeWandia Higgins\*  
Mr. and Mrs. James Hildebrand  
Ms. Catherine L. Hill  
Mrs. Deborah Hill\*  
Mr. and Mrs. John R. Hill  
Mr. and Mrs. Larry Hill\*  
Dr. Robert F. Hill III  
Mr. and Mrs. Ronald F. Hill  
Mr. and Mrs. Richard L. Hines  
Estate of Iva M. Hinkle  
Hortonia and Lori Hobbs\*  
Hon. and Mrs. David Hobson\*  
Ms. Janet L. Hogue  
Mr. and Mrs. Danny L. Holbrook  
Mr. and Mrs. Dustin A. Holfinger  
Mr. and Mrs. Roger E. Holfinger  
Mr. Dwight Hollenbeck  
Hollandia Gardens Association  
Ms. Gloria Holloway  
Home City Federal Savings Bank  
Mr. and Mrs. Gwayne G. Honeycutt  
Ruth L. Hoover  
Martha T. Horner  
Houston Machine Products, Inc.\*  
Mr. and Mrs. Murray B. Houston  
Timothy and Susan Howard\*  
Ms. Judith Hoy

Huntington National Bank  
Mr. and Mrs. Larry Hupp\*  
Mr. and Mrs. Mitchell K. Hurst  
Dr. and Mrs. Stanley Husted II  
Ms. Helen K. Hutchinson  
Mr. Jack Hutslar, PhD  
Ms. Sarah E. Hutslar  
IH Credit Union  
Helen L. Iler Trust  
Chuck and Sallie Ingle\*  
Mr. and Mrs. James W. Ingledue  
Mr. and Mrs. Andy Irick\*  
Ms. Mabel E. Jackson  
Ms. Tyra Jackson  
Jean Jaeckels\*  
Ms. Johnetta M. Jaudon  
JLAAT, LLC  
Dianne C. Jones  
Mr. and Mrs. Edward K. Jones  
Mr. and Mrs. Eric L. Jones  
Ms. Dianne Jordan  
Rev. Walter Jordan  
Joshne Hair and Nail Salon  
Kaffenbarger Truck Equipment Company  
Larry Kaffenbarger\*  
Keelsra Business Services  
Charles and Dorothy Kelley\*  
KeyBank National Association  
Estate of Matha Killinger  
Jim Kincaid\*  
Dr. and Mrs. Dana King  
Mr. Sheldon King and  
Ms. Mary Ellen Davis  
Pastor Bonny Kinnunen  
Darrell and Michelle Kitchen\*  
Kivwanis Foundation of Springfield  
Ohio Inc.  
Ms. Amy M. Klemmenson  
Mr. and Mrs. Robert S. Kline\*  
Mr. and Mrs. Mark Klopfenstein\*  
Mr. and Mrs. Russell I. Klopfer  
Mr. and Mrs. Donald P. Knotts  
Mike and Linda Knox  
Ms. Wendy C. Kobler  
Kohler Foundation, Inc.  
Mr. and Mrs. Paul E. Kostyu  
Mr. Roger T. Kramer  
Sondra Kramer\*  
Dr. and Mrs. Kevin Kreider  
Mr. Scott Krizner  
Roger and Barbara Krohn\*  
Ms. Linda A. Krug\*  
Ms. Nancy Labarre  
Lab Corps of America Holdings  
James H. and Nike D. Lagos  
Mr. and Mrs. Tom LaHaise  
Mrs. Andrea LaMar  
Mr. and Mrs. H. Michael Lambert  
Ms. Lori Lambert  
Ms. Vera H. Lambert  
John and Jill Landess\*  
Mrs. Marcella Langford  
Mr. and Mrs. Otto C. Larson  
Mr. and Mrs. Larry Lash  
Shane and Mary Latham\*  
Dr. and Mrs. Gary Lau  
Ms. Thalia E. Laventzis  
Mr and Mrs. Ricky A. Lawrence  
Mrs. Ruth M. Lawson  
Ms. Eva M. Lazear  
Leadership Clark County  
Mr. and Mrs. Steven D. Leep  
Lee's Famous Recipe Chicken\*

Ms. Kristi Leeth  
Mr. and Mrs. Ed Leinasars  
Mr. and Mrs. Wayne E. Leis  
Dr. and Mrs. Don P. Lemelle\*  
Mr. Christopher Lemon  
Mr. and Mrs. Terence Leslie  
Mr. and Mrs. Adam Leventhal\*  
Eddie and Laurie Leventhal\*  
Lima Senior Citizens Club  
Mrs. Shirley Liming  
Mr. and Mrs. Gary Linn\*  
Link-Hellmuth Ins  
Mr. Johnny Linson  
Dr. and Mrs. John Z. Little M.D.  
Littleton & Rue Funeral Home  
Locust Hills Golf, Inc  
Mr. and Mrs. Alex Loehrer  
Mr. and Mrs. Thomas Loftis\*  
Mr. and Mrs. Kevin Lohnes  
Lawrence and Bonita Longo\*  
Mr. and Mrs. Mike Lopez  
Shelley Lopez  
Mrs. Ruthellen R. Lough  
Mr. and Mrs. Karl Loveless  
Mrs. Sarah H. Lupfer\*  
Mrs. Nancy Lutz  
LWS Tax & Accounting  
Dr. and Mrs. Darryl L. Mabra  
Mad River Trading  
Madison County Vietnam Vets of America  
Ms Krista D. Magaw and  
Mr. Andrew J. Carlson  
Mr. Martin K. Mahoney  
Ms. Nancy E. Mahoney and  
Mr. Dennis W. Latimer\*  
Ms. C. Hazel Malone  
Mr. Christ G. Mantis\*  
Ms. Esther Manuel  
Mr. and Mrs. Randall K. Marker  
Marquette Associates, Inc.\*  
Ms Karl Ann Marquis  
Mel Marsh & Rick Rutan\*  
Mr. and Mrs. Michael K. Marshall  
Mr. and Mrs. Brett Martin\*  
Mr. Charles F. Martin  
Mr. and Mrs. Donald Martin\*  
Mr. James T. Martin MD  
Mr. and Mrs. Robert L. Martin  
Martin, Browne, Hull & Harper  
Joseph and Maureen Massaro\*  
Mr. and Mrs. David Mattes  
Ms. Barbara Matthies\*  
Richard and Vicki Matthies\*  
Richard and Joyce Spangler  
Mr. and Mrs. William Mattinson  
Ms. Jillian M. Mattone  
Mr. and Mrs. Sam McAdow  
McCall-Sharp Architecture, Ltd.  
Ms. Lori Lambert  
Mr. and Mrs. Phillip W. McClelland  
Mr. and Mrs. Lawrence E. McCoy\*  
Mr. Justin McDermott  
Mr. Shane McDermott  
Mr. and Mrs. Louis J. McDorman  
Mr. and Mrs. Dale McFeatters  
Dan and Judy McGregor\*  
Mr. and Mrs. Jamie McGregor\*  
Julie McGregor\*  
Nancy McGregor\*  
Ross McGregor and Cathy Crompton\*  
Ms. Shirley M. McIntosh  
Dr. and Mrs. Michael McKee  
McKinley Hall, Inc.  
Pastor and Mrs. Dewitt Means



# Contributors to New and Existing Endowment Funds

Mr. and Mrs. Jon L. Mercer  
 Mr. and Mrs. Robert Merchant  
 Merchants National Bank  
 Mr. and Mrs. Mitchell A. Meisner  
 Mershon's  
 Metals USA  
 Mr. Stephen Metzger  
 Ms. Kimberly Michael  
 Karen Mickel\*  
 Mr. and Mrs. Chuck Mihal  
 Mr. and Mrs. Dale Miller  
 Mr. David L. Miller and  
 Ms. Eline Haukenes  
 Dr. James R. Miller\*  
 Mr. Jerad Miller  
 Mr. and Mrs. Larry E. Miller  
 Mr. and Mrs. Larry M. Miller  
 Mary Sharon Miller\*  
 Mr. Michael C. Miller  
 Mr. Pat Miller  
 Mr. Peter J. Miller  
 Mr. and Mrs. Roy Miller  
 Ms. Sally K. Miller  
 Mr. and Mrs. Randy Milner\*  
 Dorothy L. Minor  
 Mr. and Mrs. J. Douglas Miranda  
 Mrs. Donna Misocky\*  
 Mitchell Painting, LLC  
 Mr. and Mrs. James E. Moody  
 Stephen P. Moody\*  
 Mr. Edmund H. Moore  
 Ms. Leah Moore  
 Ms. Patricia A. Moore  
 Dr. and Mrs. Robert Moore  
 Mr. and Mrs. Wayne Moore  
 Morgan Stanley Smith Barney  
 Mr. Ed Morley  
 Mr. and Mrs. Bob Morris\*  
 Mr. and Mrs. Charles A. Morris  
 Mr. and Mrs. Charles H. Morris\*  
 Mr. and Mrs. Robert Morris  
 Mr. and Mrs. Joe Morrow  
 Ms. Jackqueline J. Mounts  
 Mu Chi Chapter of the Omega Psi  
 Phi Fraternity  
 Dr. and Mrs. Kumar Mukerjee\*  
 Ms. Charlesine E. Murph\*  
 Ms. Kathryn D. Murphy  
 Ms. Donna J. Myers  
 Mr. and Mrs. Kevin Nau  
 Mr. and Mrs. James A. Nave  
 Ms. Marianne L. Nave  
 Navistar Inc.  
 Roger E. Neal  
 Dr. and Mrs. Stanley Nedelman\*  
 Richard Nedelman, M.D.  
 Nehemiah Foundation  
 Mr. and Mrs. Stephen Neely\*  
 Ms. Soumya Neravetla  
 New Carlisle Family Practice  
 Mr. and Mrs. Lamar Newell\*  
 Mr. and Mrs. Jerry W. Newport  
 Dr. Gregory A. Noll  
 Ms. Linda D. Nolten  
 Peter and Peggy Noonan\*  
 Ms. Marsha V. Norris  
 NOVA Pediatrics & Adolescent  
 Medicine, Inc  
 Charles and Donna Novak\*  
 Mr. Michael P. O'Brien\*  
 Sally W. Ocasek  
 Mr. and Mrs. Dan O'Keefe\*  
 Ohio State UAW-CAP Council

Ohio Valley Surgical Hospital  
 Olive Branch School Preservation Society  
 Ms. Marcella L.ONEY  
 Opportunities Industrialization Center  
 Mr. and Mrs. James Osborne  
 OSU Retirees Association  
 Frank and Tommie Otway  
 Mr. and Mrs. Carl Owens  
 PACCAR Foundation  
 Paradox Group Ltd.  
 Mr. and Mrs. Gerald Parisi  
 Mr. and Mrs. Brent Parke  
 Ms. Donna R. Parks  
 Paul Parlato\*  
 Dr. and Mrs. Charles Parsons  
 Mr. and Mrs. Mark W. Parsons  
 Mr. and Mrs. Travis W. Parsons  
 Partners for the Park  
 Mrs. Melissa Patsiavos  
 Mr. and Mrs. David Patterson\*  
 Mr. J.C. Patterson  
 Ms. Judy E. Paul  
 Douglas and Stephanie Paugh\*  
 Plato and Tina Pavlatos\*  
 Mr. and Mrs. Frank J. Pazzdzinski III  
 Mrs. Dolores Pedraza\*  
 Nancy Pence  
 P.E.O. Sisterhood Chapter AZ  
 Ms. Dorothy A. Pepple\*  
 Ms. Sharon Perkins Harris  
 Clare Perks\*  
 Mr. and Mrs. Hal A. Perry\*  
 Mr. and Mrs. Samuel Petroff\*  
 Phoenix Automotive Inc.  
 Mr. and Mrs. John Pickarski  
 Dr. Ganesh and Dr. Malathi Potdar  
 Polar Bar  
 Mr. and Mrs. Robert W. Pollock  
 Drs. J. M. and Sally Abbott Pomputius\*  
 Ms. Daragh Porter  
 Mrs. Judy Potts  
 Tom Prendergast\*  
 Capt. Daniel A. Price, USAF RET.  
 Mr. Paul D. Price  
 Walter S. Quinlan Foundation  
 Dr. Karen and Mr. John Rafinski\*  
 Mr. and Mrs. John Raisbeck  
 Mrs. Joellen Raley and  
 Mr. Kirby Lee Raley III  
 Mr. Angus Randolph\*  
 Dr. and Mrs. Moin Ranginwala  
 Dr. and Mrs. Mujeeb Ranginwala\*  
 Abdur Rauf MD  
 Bill Ray and Jeanne Lampe\*  
 Mr. and Mrs. Robin G. Rea  
 Dr. and Mrs. John Rechsteiner\*  
 Ms. Barbara Reed  
 Mr. William A. Reed  
 Mr. Donald C. Reiner and Mrs. Linda  
 Spahr Reiner  
 Mr. and Mrs. Ronald V. Rhine  
 Mr. and Mrs. Richard Rice  
 Ms. Sheila E. Rice\*  
 Doug Richey Construction & Maintenance  
 Mr. and Mrs. Kyle A. Richards\*  
 Ridgewood School  
 Mrs. Visha A. Ritter  
 Dr. and Mrs. Dennis Roark  
 Mr. Jeffrey H. Roberds  
 Mr. and Mrs. Mark F. Roberts\*  
 Ms. Mary Ann Roberts  
 Mr. and Mrs. Mark Robertson\*  
 Mr. Reed Robertson\*

Mr. William L. Robinson  
 Rocking Horse Community Health Center  
 Rocky Point Chapel  
 Rick and Joy Rogers\*  
 Mr. and Mrs. Paul W. Rohrer  
 Mr. Kevin Rose and Ms. Marta Wojcik  
 Mr. and Mrs. Rollin E. Rose  
 Andy and Ann Roseberry  
 Jim and Gaylee Ross\*  
 Mr. Ronald R. Ross  
 Ms. Jennifer Rousculp-Miller  
 Mr. and Mrs. Robert E. Rousculp  
 Mr. and Mrs. Wayne M. Routzahn  
 Mr. and Mrs. Mark A. Rucker  
 Mr. and Mrs. Michael I. Rucker  
 Mr. and Mrs. Thomas Rue  
 Ms. L. Roselin Runnels  
 Mr. and Mrs. Daniel M. Runyan O.D.  
 Mr. Kenneth G. Rush Esq.  
 Mrs. Vancenina Rutherford  
 Mr. Thomas Rutschilling\*  
 Mr. Michael S. Sagraves  
 Mr. Randy J. Sagraves  
 Ms. H. Louise Samosky  
 Mr. and Mrs. Frank J. Sanders\*  
 Ms. Linda S. Sanders  
 Ms. Elly Satyawati and Mr. Filix Kencana  
 Mrs. Margaret Sayers  
 Mr. William Scarff\*  
 Mr. and Mrs. Doug Schantz\*  
 Mr. Ed Schechter  
 Ms. Dian Schmid\*  
 Mr. and Mrs. Jean-Pierre Schmid  
 Mr. Mic Schmitt  
 Scholl Surveying, LLC\*  
 Mr. and Mrs. Chuck Schreiber  
 Mr. and Mrs. Stephen Schumaker\*  
 Ms. Kimberly Scott and  
 Mr. Mark E. Derwent  
 Mr. Anthony Scruse and  
 Mrs. Victoria D. Dawson-Scruse  
 Ms. Sally Schwartz  
 Ms. Donna S. Sebastian\*  
 Secretary of State  
 Security National Bank  
 Self-Reliance, Inc  
 Ms. Linda Shaffer\*  
 Mr. and Mrs. Thomas J. Shanahan Jr.  
 Mr. and Mrs. Michael R. Shank  
 Ms. Peggy Shank  
 Mr. and Mrs. John Shanley  
 Dr. and Mrs. Ravi Shankar  
 Mr. Ned Sharp and  
 Ms. Marynelle Greene\*  
 Mr. and Mrs. James Sheehan\*  
 Ms. Susan Sheldon Hupp\*  
 Dr. Jerry and Kay Shell\*  
 Mrs. Richele Shepard and Mr. Jeff Smith  
 Mr. and Mrs. Roger Sherrock  
 Ms. Nancy L. Sherwood  
 Mr. and Mrs. Robert L. Shively  
 Ms. Jessie Shropshire\*  
 Ms. Norma Shropshire  
 Dr. and Mrs. Sajjad Siddiqi  
 Si Fi Ministry  
 Mr. and Mrs. Marvin Silverstein  
 Gerald and Dianne Simonton\*  
 Mr. and Mrs. Terry W. Simonton  
 Ms. Barbara Sims  
 Jagdish and Daljeet Singh\*  
 Ms. Selena Singletary  
 Mr. and Mrs. Jerry K. Smedley\*  
 Mr. and Mrs. David M. Smiddy

Mr. and Mrs. Brian A. Smith  
 Ms. Corrine L. Smith  
 Dr. and Mrs. David Smith\*  
 Mr. and Mrs. Donald Smith\*  
 Mr. and Mrs. Edward W. Smith  
 Mr. J.D. Smith  
 Mr. and Mrs. James T. Smith  
 Joyce Smith  
 Mr. and Mrs. Nelson T. Smith  
 Ms. Rayma E. Smith Ph.D.  
 Mr. and Mrs. Alfred B. Thomas  
 Mr. and Mrs. Roger Smith  
 Ms. La'Ronda Smoot-Tawiah  
 Mr. James W. Snyder\*  
 Sophisticated Systems, Inc.  
 South Charleston Community Club  
 Ms. Patricia A. Spalla  
 Richard and Joyce Spangler  
 Mr. and Mrs. Michael P. Speakman  
 Speedway LLC  
 Mr. and Mrs. John M. Spencer\*  
 Ms. Mary L. Spencer  
 Mr. and Mrs. John M. Spinelli  
 Mr. and Mrs. Daniel L. Spitzer  
 Mr. Matt Spradlin  
 Springfield Arts Council  
 Springfield Christian Youth Ministries  
 Springfield City Schools  
 Springfield Class of 1962  
 Springfield Family YMCA  
 Springfield Marine Corps League  
 Springfield Metropolitan  
 Housing Authority  
 Springfield Museum of Art  
 Springfield-Clark Career  
 Technology Center  
 Kathryn E. Spurgin  
 Ms. Jean Spurlin  
 Tom and Ann Stafford\*  
 Dr. and Mrs. H. Thomas Staton  
 Mr. and Mrs. Geoffrey Steele\*  
 Darmel and June Steen\*  
 Mr. and Mrs. Arthur W. Stephens  
 Ms. Phyllis E. Stephens  
 Reverend and Mrs. Ray Stewart  
 Ms. Susan Stiles  
 St. John's Lutheran Church  
 Stingray Enterprises LLC\*  
 Mr. and Mrs. Russell Stocke  
 Mrs. Barbara Stoddard Wurster  
 Mr. Timothy R. Stout  
 Stroman and Assoc Inc  
 Mr. and Mrs. Allen G. Stuckey  
 Mr. Steve Stuckey, CPA  
 Stuckey Ventures LLC UPS Store #4588  
 William A. Stumpf\*  
 Mr. and Mrs. Timothy P. Sullivan  
 Ms. Cathy Summers  
 Ms. Barbara L. Sutter  
 Denise and Bob Suver\*  
 Mr. David Swackhamer  
 William and Pamela Swaim\*  
 Ms. Martha J. Swalley  
 Mr. Charles D. Swaney\*  
 Mr. and Mrs. Eugene R. Swanger  
 Michelle and Jim Sweeney\*  
 Ms. Alicia Sweet Hupp  
 Mrs. Jane Switzer\*  
 Annette Syrus\*  
 Mr. Paul Szymanski  
 Walt and Martha Szczesny\*  
 Ms. Celia Tabor  
 TAC Enterprises

Mr. and Mrs. Roger D. Tackett  
 The Matt Talbot House, Inc.\*  
 Ms. Carla J. Tamplin  
 Mr. Daniel P. Tasset  
 Mr. and Mrs. Gordon Taylor  
 John and Brenda Taylor\*  
 Tecumseh Land Trust\*  
 Mr. and Mrs. Michael Tembreull  
 Ms. Denise Terrell  
 Mr. and Mrs. Philip Teusink  
 Mr. and Mrs. Alfred B. Thomas  
 Mr. and Mrs. Earl E. Thomas  
 Gary A. Thomas D.D.S.\*  
 Mrs. Isabelle Thomas  
 Ms. Karen Thomas  
 Roger and Dorothy Thomas\*  
 Ms. Carol Thompson  
 Mr. James R. Thompson  
 Mr. and Mrs. Lloyd Thompson\*  
 Mr. and Mrs. Keith Thue  
 The Tiller Family Foundation  
 Mr. and Mrs. Joseph Tinius\*  
 Ms. Robin J. Tipton and  
 Ms. Rosetta Crabtree  
 Mr. Brian Z. Tobias and  
 Ms. Jillian A. Shellabarger  
 Mr. and Mrs. Phillip M. Travis  
 Mr. Michael Trempe\*  
 Mr. and Mrs. Thomas Trempe\*  
 Mr. David Trimmer  
 Mr. and Mrs. Curtis L. Truss Jr  
 Ms. Cathy Tuckerman  
 Rev. Diane Turner-Sharazz  
 Jim and Punky Turner\*  
 Mr. Marc K. Turner  
 The Turner Foundation\*  
 Mr. Lawrence Turyn  
 Troy Christian Schools, Inc.  
 U.A.W, 402\*  
 Ms. Patricia E. Ulery  
 Dr. Richard and Darlene Umbaugh\*  
 The Union Club, Inc.  
 United Senior Services  
 United Way of Clark, Champaign, and  
 Madison Counties, Inc.\*  
 V & E Equities\*  
 Ms. Cynthia Valente\*  
 Mr. and Mrs. Paul Valente  
 James and Julia Valentine\*  
 Mrs. Barbara Stoddard Wurster  
 Ted and Jodi Vander Roest\*  
 Mr. and Mrs. Christopher Vandiford  
 Mr. and Mrs. Ronald Vicker  
 Mr. and Mrs. Nathaniel R. Vivians  
 Ms. Amy Van Voorhis  
 Mr. and Mrs. Dene A. Voorhees  
 Mr. and Mrs. Jim Voorhees\*  
 Mr. and Mrs. Harold A. Voorhees  
 Mr. and Mrs. Steven E. Waddle  
 Mrs. Charlot Wade\*  
 Mr. R. Buck Wade  
 Dr. and Mrs. Peter Wagner  
 Ms. Tara Wagner  
 Mr. Larry Walchli  
 Wallick Properties Midwest LLC  
 Mr. and Mrs. David L. Walters  
 Ms. Amy Walthall  
 Chet and Judy Walthall\*  
 Ms. Nancy Ware  
 Mr. and Mrs. Donald L. Warner  
 Mr. and Mrs. Robert A. Warren\*  
 Mrs. Virginia Warren  
 Mr. and Mrs. Alan E. Watson

Mr. Roger L. Watson  
 Francis Wayne LTD.  
 WCM Investment Management  
 Ms. Julie A. Weaver  
 Mr. and Mrs. Joseph A. Weckerle III  
 Mr. and Mrs. James C. Wehrman  
 Weixelbaum Trust  
 Dr. and Mrs. Robert Welker  
 Chris Wells\*  
 Reed and Gail Welsh\*  
 Westcott House Foundation  
 Mr. and Mrs. Mark Westfall  
 Mr. Phillip Westfall  
 Mr. and Mrs. Richard Whalen\*  
 Marshall Whitacre\*  
 Ms. Cheryl L. White  
 Mr. and Mrs. Jerry L. White  
 Mr. and Mrs. Russell A. White  
 Ms. Vivian M. White  
 Ms. Karen R. Wilburn  
 Mrs. Carol Williams  
 Mr. and Mrs. David W. Williams\*  
 Ms. Mary F. Williams  
 Dr. Thomas J. Williams  
 Jan E. Williams  
 Vernie L. Williams  
 Mrs. Janet Williamson\*  
 Mr. and Mrs. Raymond P. Willis  
 Mr. James R. Willoughby  
 Ms. Albretta S. Wilson  
 Mr. and Dr. Andy Wilson  
 Mr. and Mrs. Chad Wilson\*  
 Mr. and Mrs. Mannie Wilson  
 Wilson Printing & Graphics of London, Inc.  
 Wilson Sheehan Foundation  
 Wilson Sheehan Foundation, U.S. Trust  
 Mrs. Melanie F. Wilt  
 Mr. and Mrs. W.G. Wimberly  
 Mr. and Mrs. Arthur H. Win  
 Wittenberg University  
 Mr. John Wobbe and Ms. Daragh Porter\*  
 Mr. Raymond Woeber  
 Mr. and Mrs. Timothy J. Wolf\*  
 Women's Outreach of Emanuel United  
 Church of Christ  
 Mrs. Deborah Woods  
 Mr. and Mrs. Richard E. Woods  
 Mr. Jack G. Woodhouse  
 Mrs. Donna Wooten  
 Wright Construction  
 Mr. and Mrs. Michael W. Wright  
 Mrs. Sandra J. Wynn  
 Yamada North America Inc  
 Mr. Chad Yancey  
 Mr. C. Ray Yaw Jr.  
 Mr. and Mrs. Carl Young  
 Mrs. Clara Young-Gordon  
 Mr. and Mrs. John E. Young\*  
 Ms. Marguerite Young  
 Mr. Paul Young  
 Mr. and Mrs. Philip E. Young\*  
 Mr. and Mrs. Willie Young Sr.  
 Your Cause  
 Dr. and Mrs. David A. Zainey  
 Ms. Nancy Zerkle  
 Monte W. Zimm\*  
 Ms. Nancy L. Zirkle  
 Zonta Club of Springfield  
 Mr. and Mrs. Daniel Zorn  
 Ms. Melissa K. Zunis

\* indicates support of Partners  
 in Philanthropy

## In Memory of

Rosie Anderson  
 Donnis Aaron David Bailey  
 Norman "Bud" Bass Sr.  
 Thelma Berley  
 John Elden Bowman  
 Mildred Carey  
 Louise Carroll  
 Ruth Ann Carwile  
 David Cottrell  
 Sharon Ferguson  
 Jim Foreman  
 Mary Ellen Fulmer  
 Phyllis Marlene Goodwin  
 Paul Hagelberg in Memory of Betsy  
 Helen Holoviak  
 Danny Hutslar  
 Danny L. Hutslar  
 Karen  
 Richard E. Kramer  
 Beatrice Martin  
 Jane McPadden-Fobes  
 Ron McGonigal  
 Ronald McGonigal  
 Betty Miller  
 Rita Parlato and Martha Giordano  
 Christina Parli  
 Diane Mary Polnik  
 Dr. Richard Potts  
 Mike Powell  
 Betty Raup  
 Nancy Rentz  
 Erma Rockhold  
 Donald Roush  
 Carolyn Smith  
 Priscilla Smithers  
 Joe Spinelli, Class of '57 and Louie Spinelli,  
 Class of '55  
 of the inspiring, unforgettable teachers at  
 Springfield High School  
 Don J. Thomas  
 Barbara Valley, Virginia Kinarney, Nancy  
 Sanford, Carol Raynor and Rita Valley  
 Dr. George Varghese  
 Ron Williams

## In Honor of

Ruth Addis and Susie Brougher  
 Andy Bell  
 Cathy Bell  
 Edward Tague Bell 10th Birthday  
 Louise Carroll and Bonita Longo  
 Lula Cosby  
 Barbara Eckstrand  
 Honor of Erin, Caitlin & Freddy Ellis and in  
 Memory of my daughter Shannon  
 Sally Hutslar  
 Terry & Cindy Lambert, George Cibelli,  
 Donna Cibelli, Bunker & Molly, Susan  
 Henson, Pete & Peggy Noonan  
 Memory of Hattie Lawson and in Honor of  
 Alice Marshall  
 Lisa, Molly and Jeanne Loftis  
 Tom & Mary Lou Loftis 50th  
 wedding anniversary  
 Alice Marshall  
 Ron McGonigal  
 Mary Alice Neely  
 Pete Noonan's birthday  
 Rodney Rice  
 Sheila Rice  
 Doug Schantz  
 Ellen Sheets  
 Rev. Donald and Mrs. Carolyn Smith  
 Celebration of Dr. & Mrs. John Spencer  
 Chet Walthall



**Springfield Foundation**  
For good. For ever.®

**Springfield Foundation**

333 North Limestone St.  
Suite 201  
Springfield, Ohio 45503-4250  
937-324-8773 *ph*  
937-324-1836 *fax*

[springfieldfoundation.org](http://springfieldfoundation.org)

*Address service requested*

**Foundation Staff**



**Ted Vander Roest**  
*Executive Director*



**Susan Carey**  
*Grants and Scholarships Director*



**Victoria Richards**  
*Director of Development & Marketing*



**Joyce Dawson**  
*Accountant*



**Teresa Brumfield**  
*Office Manager*



**Wendy Voorhees**  
*Administrative Assistant*

**Foundation Management**

**OFFICERS**



**Kim Fish**  
*President*



**Steve Neely**  
*Vice President*



**Bill Brouger**  
*Treasurer*



**Tammi Angle**  
*Secretary*

**BOARD**



**Dean Blair**



**Sunna Bass**



**Lula Cosby**



**Cathy Crompton**



**Greg Flax**



**Debbie Hill**



**Darrell Kitchen**



**Tom Loftis**



**Maureen Massaro**



**Dan O'Keefe**



**Shelia Rice**



**Bill Scarff**



**Blake Shaffer**



**Jagdish Singh**



**Brian Smith**



**Rachel Wilson**

Not pictured: **Victoria Dawson-Scrusse**



Confirmed in Compliance with  
National Standards for U.S.  
Community Foundations